

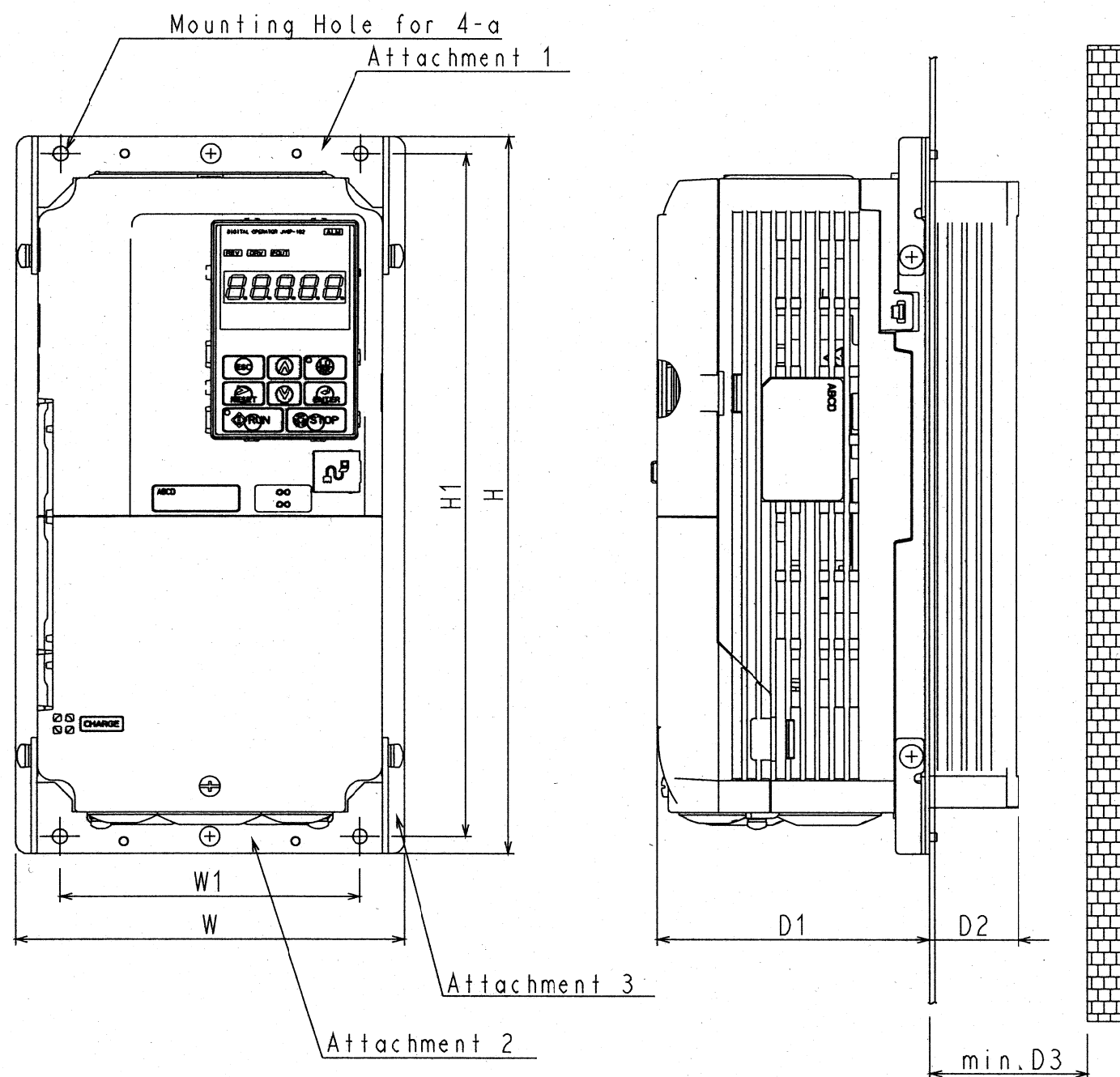
This figure shows dimensions, attachment mounting procedure, and the mounting panel cut dimensions of the inverter unit mounted with an attachment for heat sink protrusion for the A1000 series (in-panel mounted) heat sink.

[Subject Models]

CIMR-A□2A0004~0081

CIMR-A□4A0002~0044

Inverter Unit Dimensions During Adapter Mounting



Note 1) In cases of use in a relatively clean environment both inside and outside the inverter unit mounting panel, it is possible to remove the heat generating parts to the outside by mounting parts attachments 1, 2 and 3 by the "Attachment Mounting Method" of Page 10/16.

Note 2) In cases here the environment outside the inverter unit mounting panel (die-cast case side) is not very good, attach a gasket or apply a sealant to the mounting panel at the size shown in Page 14/16 in order to increase the hermeticity of the attachment.

Inverter Model	W	W1	H	H1	D1	D2	D3	a
CIMR-A□2A0004 0006 0008 0010 0012	158	122	294	280	109	36.4	50	M5
CIMR-A□2A0018 0021	158	122	294	280	109	53.4	60	M5
CIMR-A□2A0030 0040	158	122	294	280	112	53.4	60	M5
CIMR-A□2A0056	198	160	329	315	112	73.4	80	M5
CIMR-A□2A0069 0081	238	192	380	362	119	76.4	85	M6
CIMR-A□4A0002 0004 0006	158	122	294	280	109	36.4	50	M5
CIMR-A□4A0007 0009 0011	158	122	294	280	109	53.4	60	M5
CIMR-A□4A0018 0023	158	122	294	280	112	53.4	60	M5
CIMR-A□4A0031	198	160	329	315	112	53.4	60	M5
CIMR-A□4A0038	198	160	329	315	112	73.4	80	M5
CIMR-A□4A0044	238	192	380	362	119	76.4	85	M6

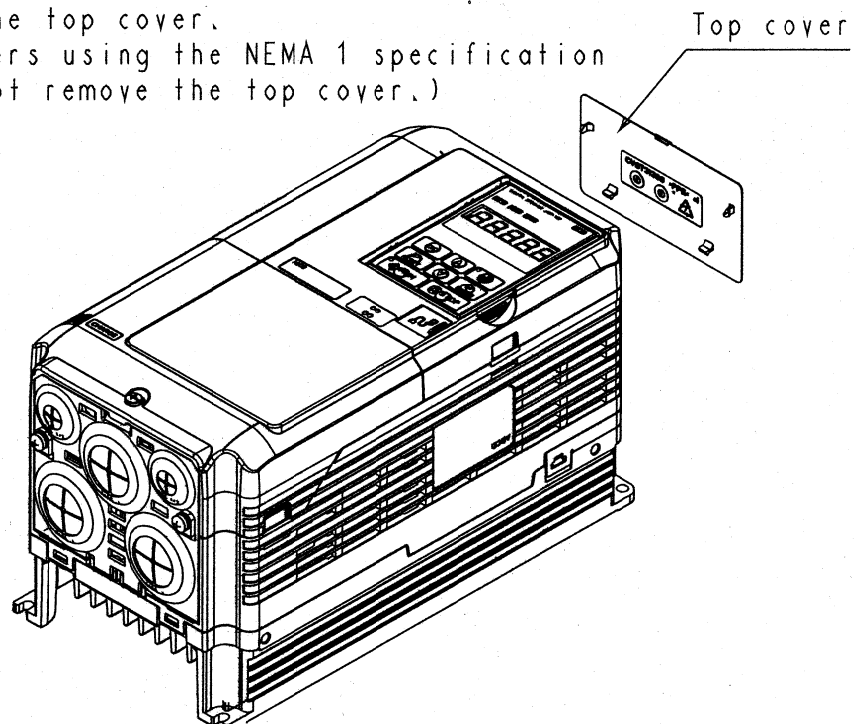
These figures apply to the following inverters.

CIMR-A□2A0004~0056 CIMR-A□4A0002~0038	M5x10 pan-head screws +S+W(x4)
CIMR-A□2A0069 CIMR-A□4A0044	M6x14 pan-head screws +S+W(x4)

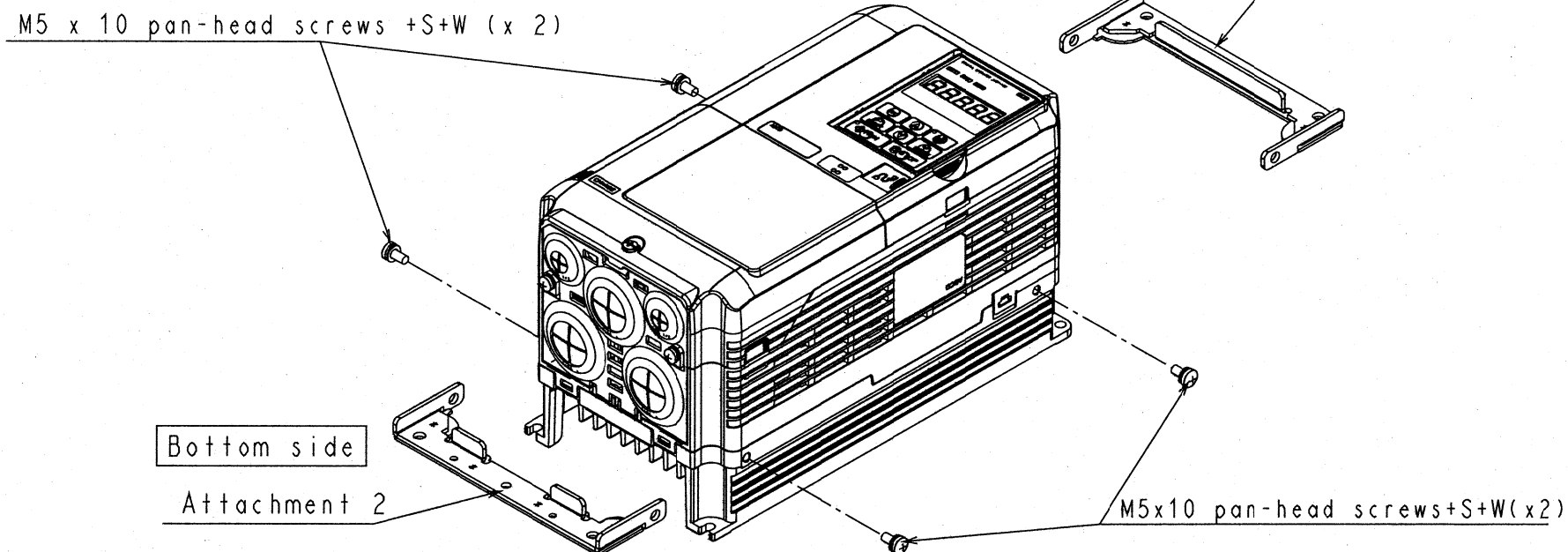
Attachment Mounting Method

(These drawings describe a case where the CIMR-A□2A0012 is used as an IP20)

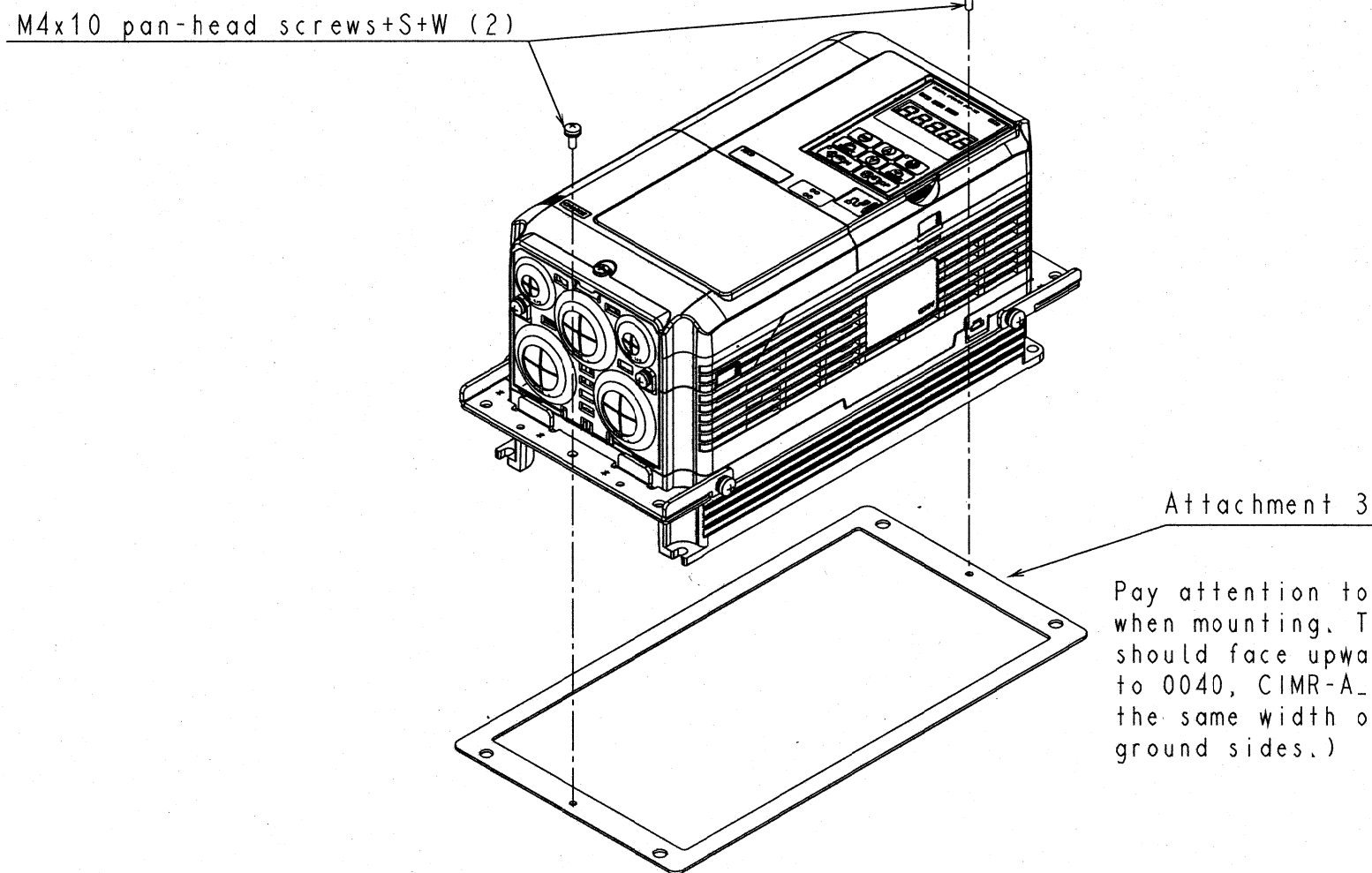
- ① Remove the top cover.
(*Customers using the NEMA 1 specification should not remove the top cover.)



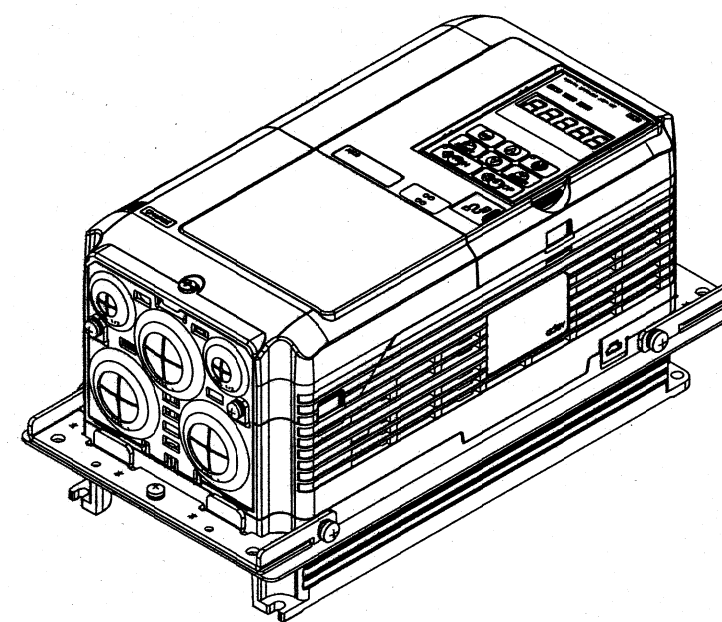
- ② Mount the attachment 3 to the mounting holes of attachment 1 and attachment 2 using the associated M4x10 pan-head screws +S+W.



- ③ Mount attachment 3 to the mounting holes of attachment 1 and attachment 2 using the associated M4x10 pan-head screws+S+W.



Completion Diagram



These figures apply to the following inverter.

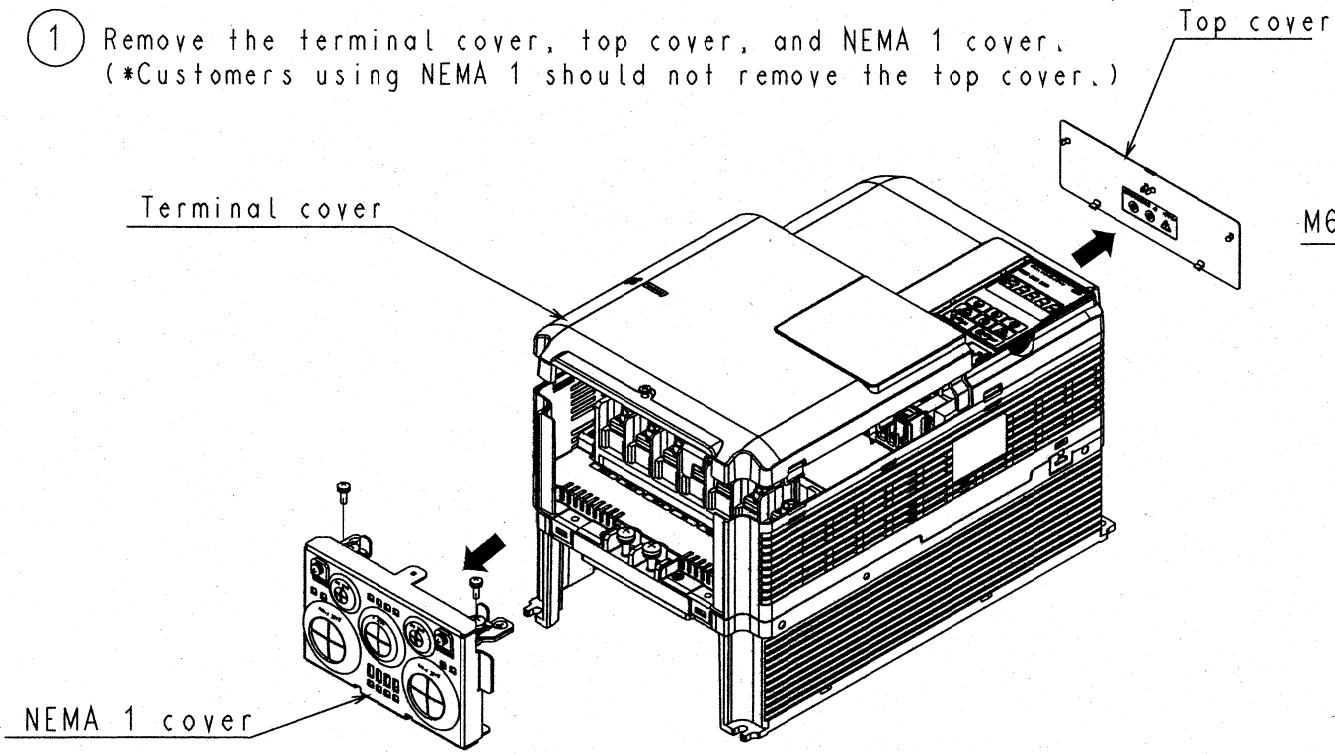
CIMR-A□2A0081

M6x14 pan-head screws+S+W(x4)

Attachment Mounting Method

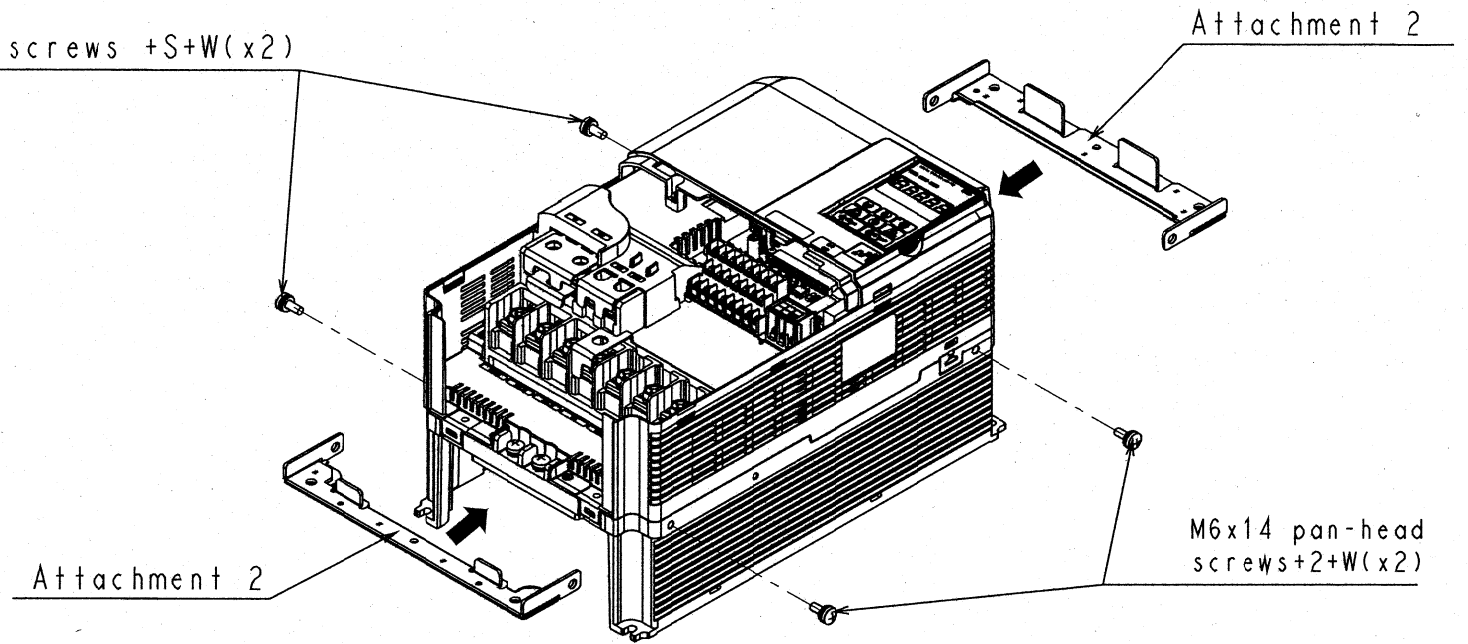
(These figures describe a case where CIMR-A_2A0081 is used as IP20.)

- ① Remove the terminal cover, top cover, and NEMA 1 cover.
(*Customers using NEMA 1 should not remove the top cover.)



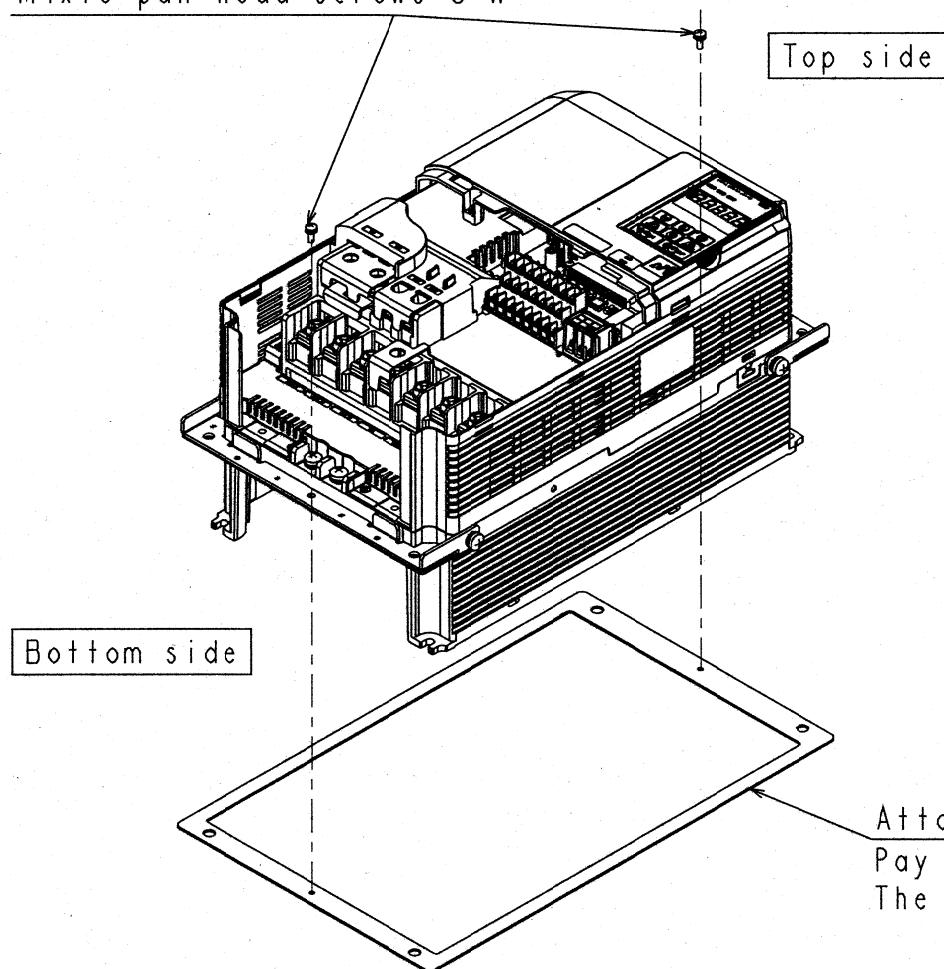
- ② Mount attachment 1 and attachment 2 to the mounting holes of the heat sink side using the associated M6x14 pan-head screws+S+W.

M6x14 pan-head screws +S+W(x2)



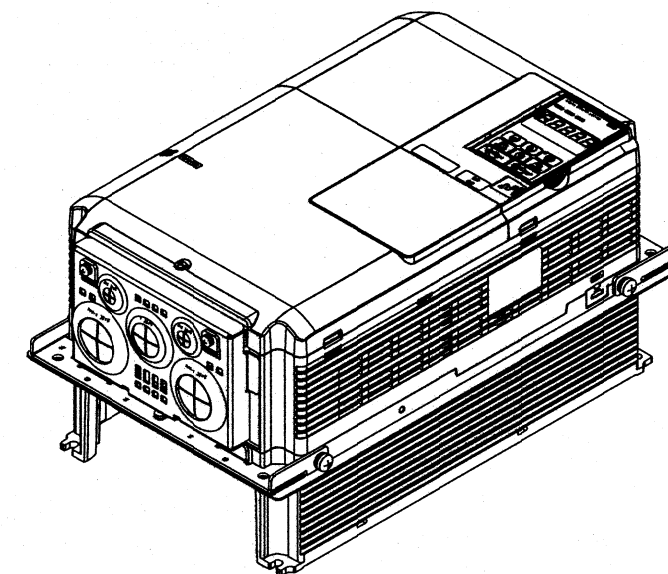
- ③ Mount attachment 3 to the mounting holes of attachment 1 and attachment 2 using the associated M4x10 pan-head screws+S+W.

M4x10 pan-head screws+S+W



- ④ Mount the terminal cover, NEMA 1 cover.

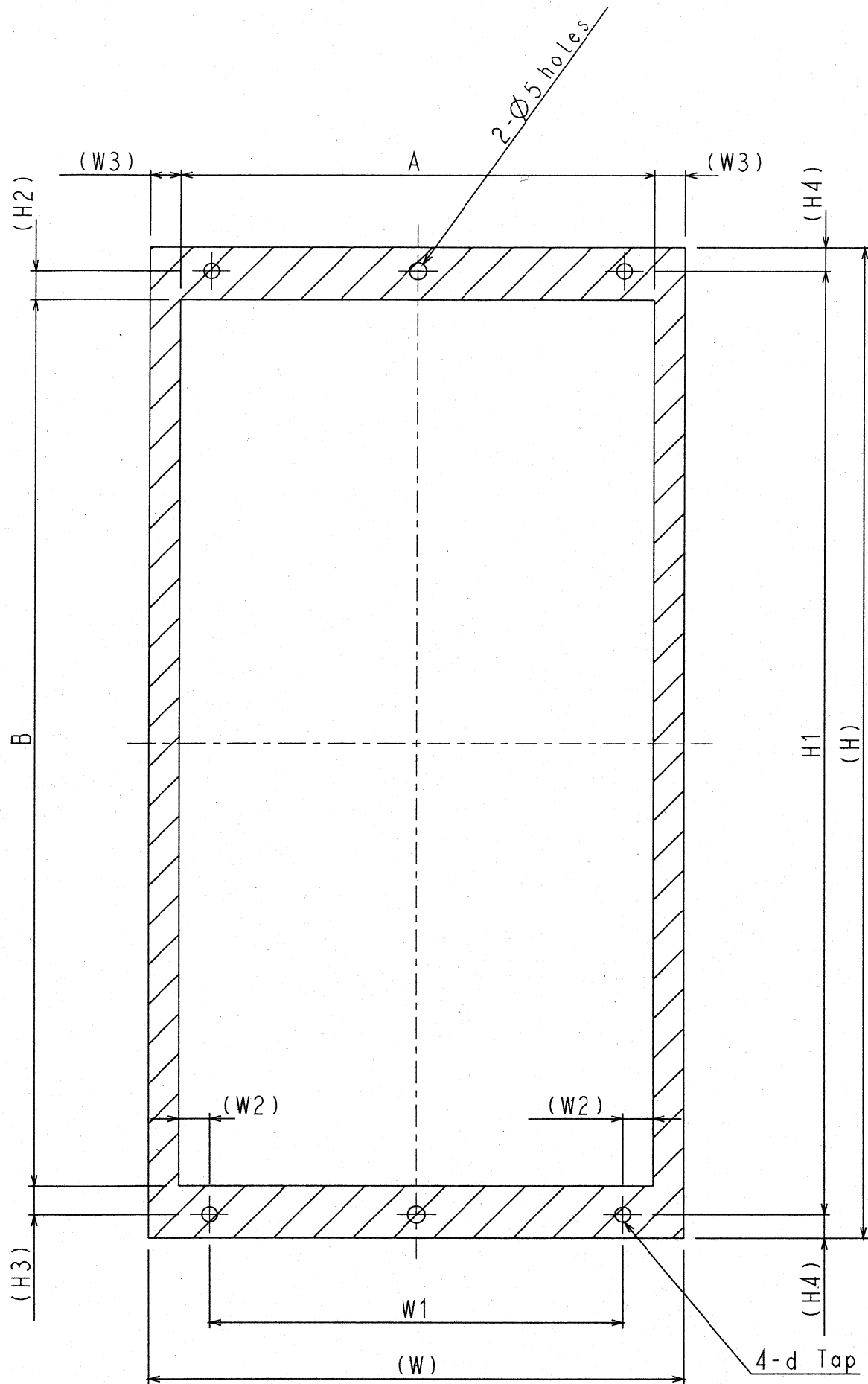
Completion Diagram



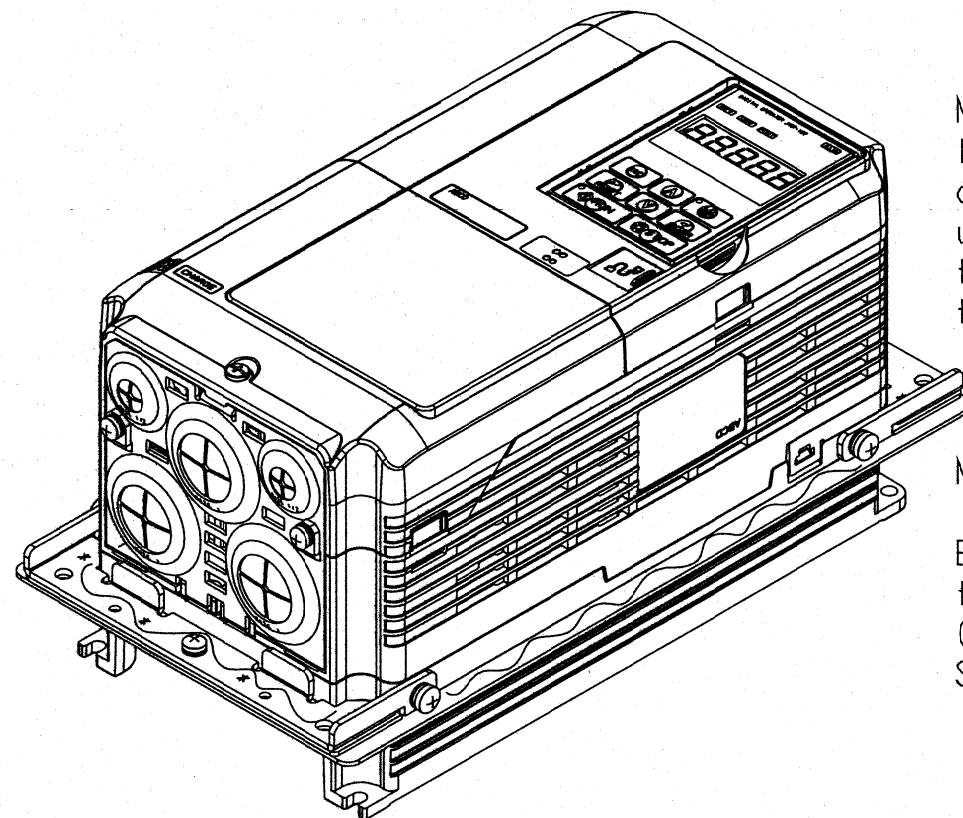
Attachment 3
Pay attention to the mounting direction.
The wide side faces upward.

Panel Cutting Diagram

*Up to slanted lines (Dimensions include gasket dimensions)



Model	W	H	W1	(W2)	(W3)	H1	(H2)	(H3)	(H4)	A	B	d
CIMR-A□2A0004 0006 0008 0010 0012 0018 0021 0030 0040	150	294	122	9	9	280	8.5	8.5	7	140	263	M5
CIMR-A□2A0056	198	329	160	10	9	315	17.5	10.5	7	180	287	M5
CIMR-A□2A0069 0081	238	380	192	14	9	362	13	8	9	220	341	M6
CIMR-A□4A0002 0004 0006 0007 0009 0011 0018 0023	158	294	122	9	9	280	8.5	8.5	7	140	263	M5
CIMR-A□4A0031 0038	198	329	160	10	9	315	17.5	10.5	7	180	287	M5
CIMR-A□4A0044	238	380	192	14	9	362	13	8	9	220	341	M6



Note 1)

If the gap between attachments 1, 2, 3 and the inverter unit is problematic, attach a gasket to the panel side, or apply a sealant to the wavy line in the figure.

Note 2)

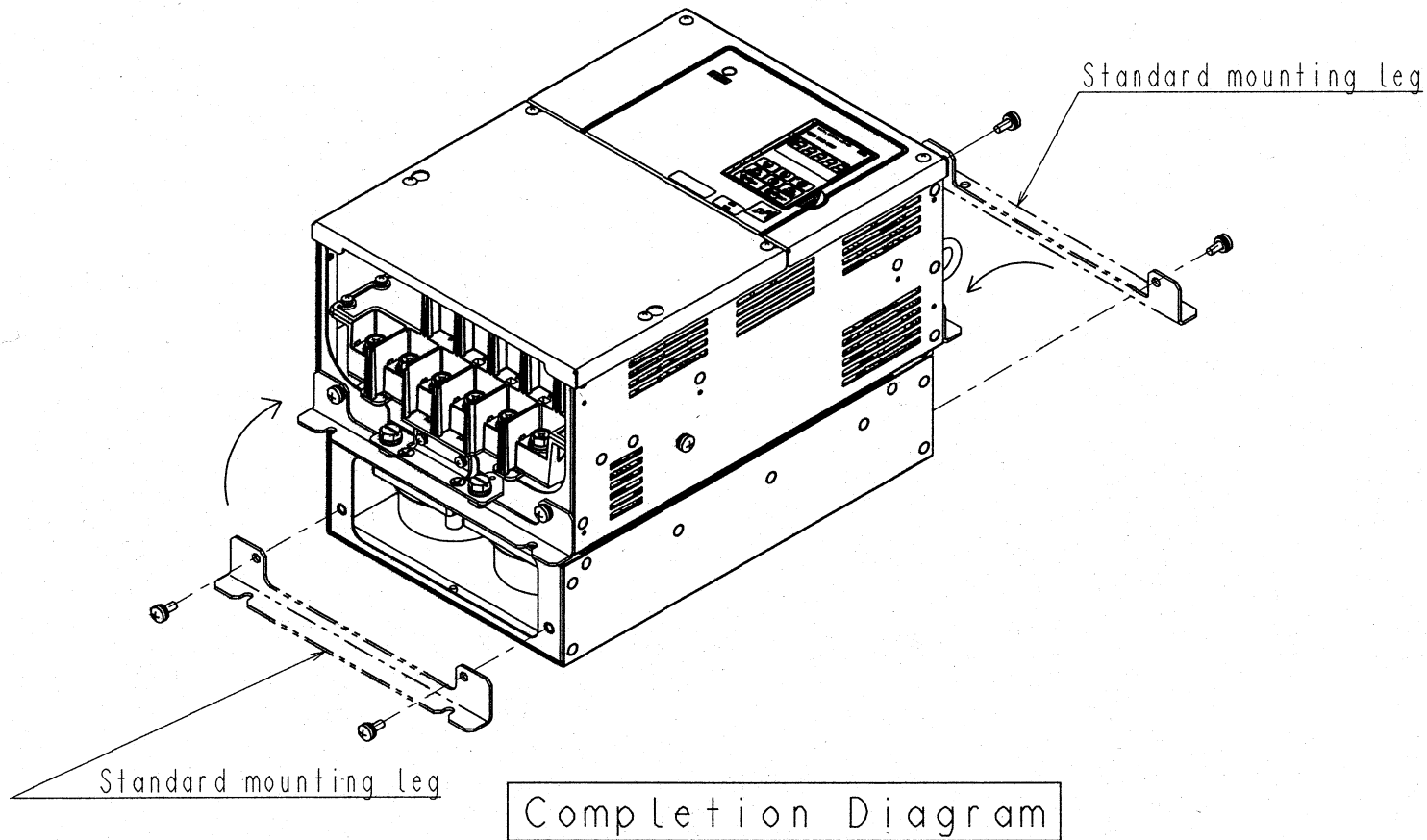
For the gasket, use CR-type or EPDM-type foam rubber with a thickness of about 2mm.
(Gasket: INOAC Corporation C-4205, etc.
Sealant: Shin-Etsu Silicone KE-3494 etc.)

Mounting Leg Replacement Method-1

CIMR-A□2A0110, 0138
 CIMR-A□4A0058~0103

(These figures describe the CIMR-A_2A011.)

Remove the mounting legs of the inverter, and replace at the position at the positions of the figure below.



Mounting Leg Replacement Method- 2

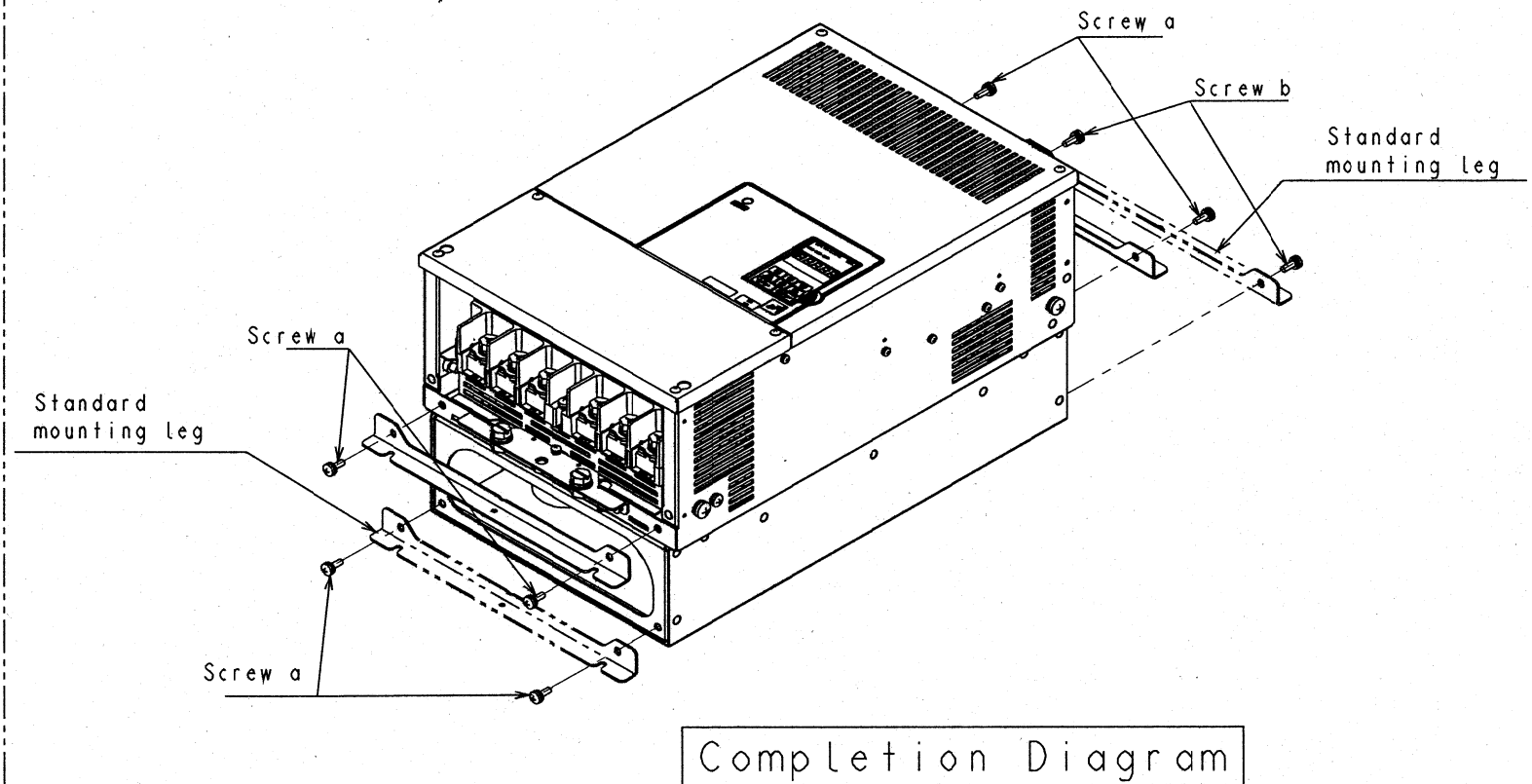
These figures apply to the following inverters.

CIMR-A□2A0169~0415
 CIMR-A□4A0139~1200

(These figures describe the CIMR-A_2A011.)

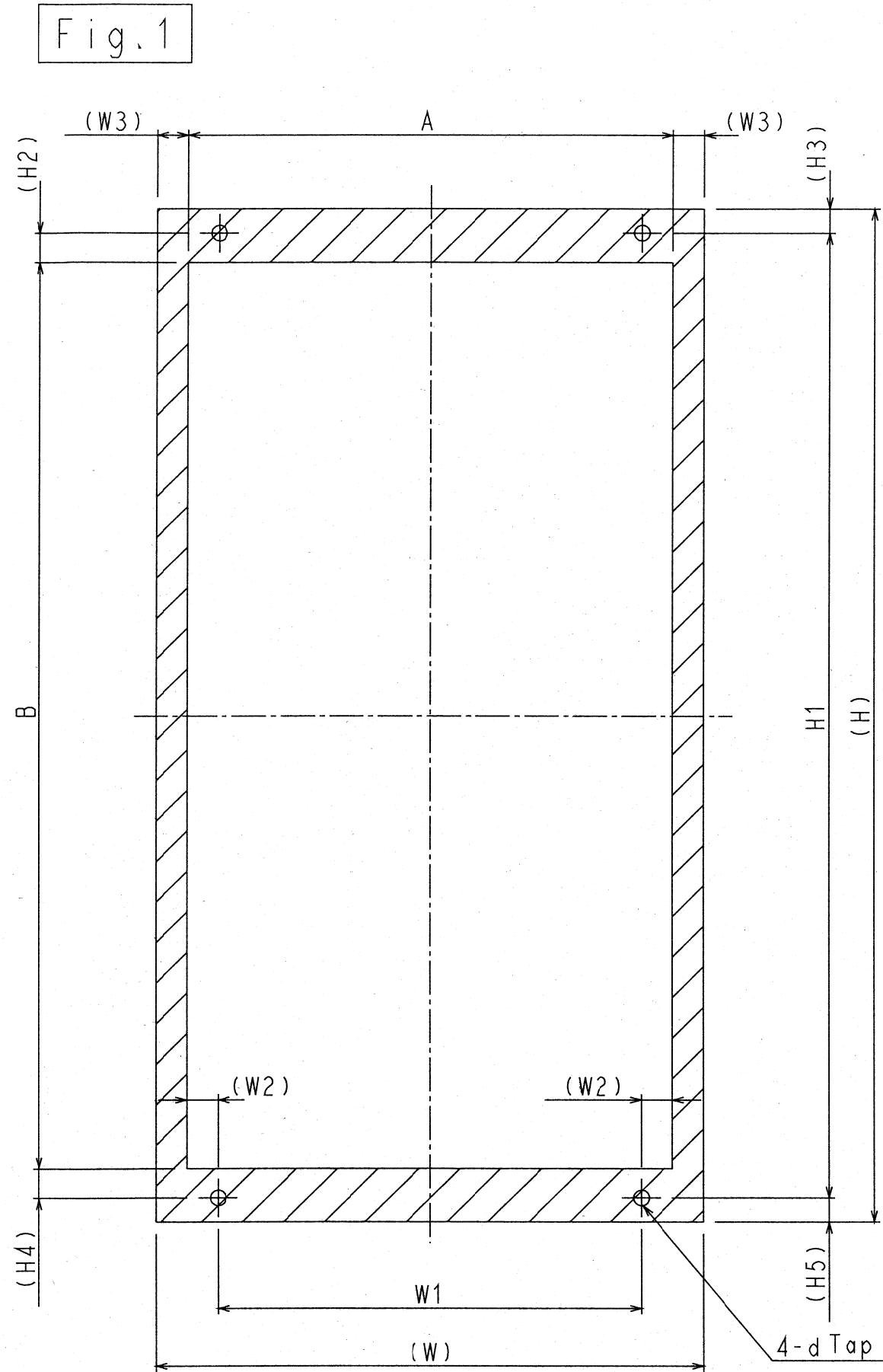
Remove the inverter unit mounting legs, and switch to the positions in the figure below after having removed to associated screws a of the inverter unit.

Note) Because screws a are used to fix the internal parts of the inverter, in cases where the mounting legs are returned to their original positions and secured with screws b, fix screws a at the original positions. Screws a and b will be bolts in the CIMR-A_2A0250 to 0415, CIMR-A_0208 to 1200.)



Panel Cutting Diagram

*The diagonal lines and () dimensions show the gasket dimensions.



Model	W	H	W1	(W2)	(W3)	H1	(H2)	(H3)	(H4)	(H5)	A	B	d	Fig.	
CIMR-A□2A0110	250	400	195	19.5	8	385	8	7.5	8	7.5	234	369	M6	Fig.1	
CIMR-A□2A0138	275	450	220	19.5	8	435	8	7.5	8	7.5	259	419	M6		
CIMR-A□2A0169 0211	325	550	260	24.5	8	535	8	7.5	8	7.5	309	519	M6		
CIMR-A□2A0250 0312	450	705	325	54.5	8	680	12.5	12.5	12.5	12.5	434	655	M10		
CIMR-A□2A0360 0415	500	800	370	57	8	773	16	14	17	13	484	740	M12		
CIMR-A□4A0058	250	400	195	19.5	8	385	8	7.5	8	7.5	234	369	M6		
CIMR-A□4A0072	275	450	220	19.5	8	435	8	7.5	8	7.5	259	419	M6		
CIMR-A□4A0088 0103	325	510	260	24.5	8	495	8	7.5	8	7.5	309	479	M6		
CIMR-A□4A0139 0165	325	550	260	24.5	8	535	8	7.5	8	7.5	309	519	M6		
CIMR-A□4A0208	450	705	325	54.5	8	680	12.5	12.5	12.5	12.5	434	655	M10		
CIMR-A□4A0250 0296 0362	500	800	370	57	8	773	16	14	17	13	484	740	M12		
CIMR-A□4A0414	500	950	370	57	8	923	16	14	17	13	484	890	M12		
CIMR-A□4A0515 0675	670	1140	440	107	8	1110	19	15	19	15	654	1072	M12		Fig.2
CIMR-A□4A0930 1200	1250	1380	1100	67	8	1345	19	20	19	15	1234	1307	M12		Fig.3

Fig.2

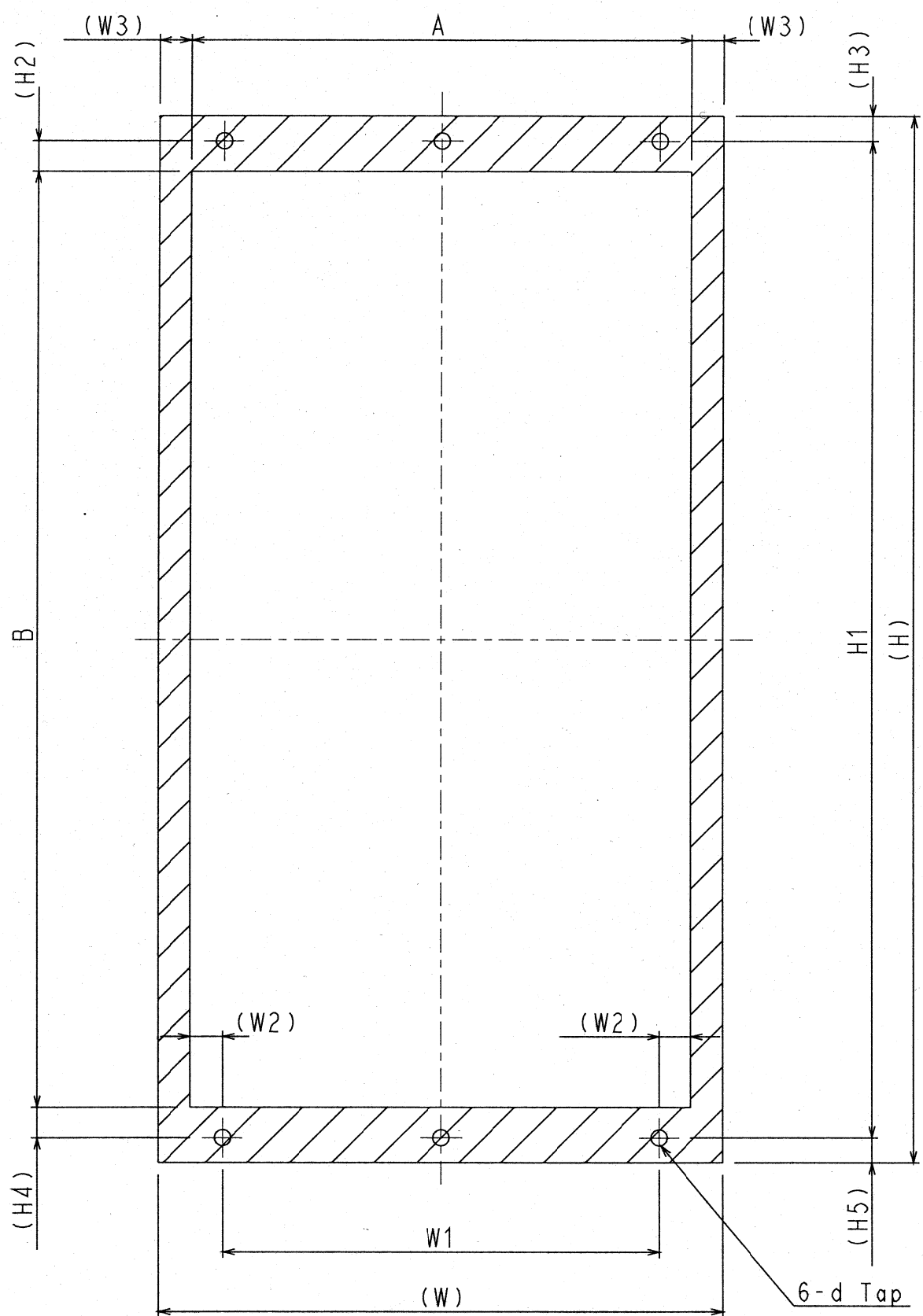
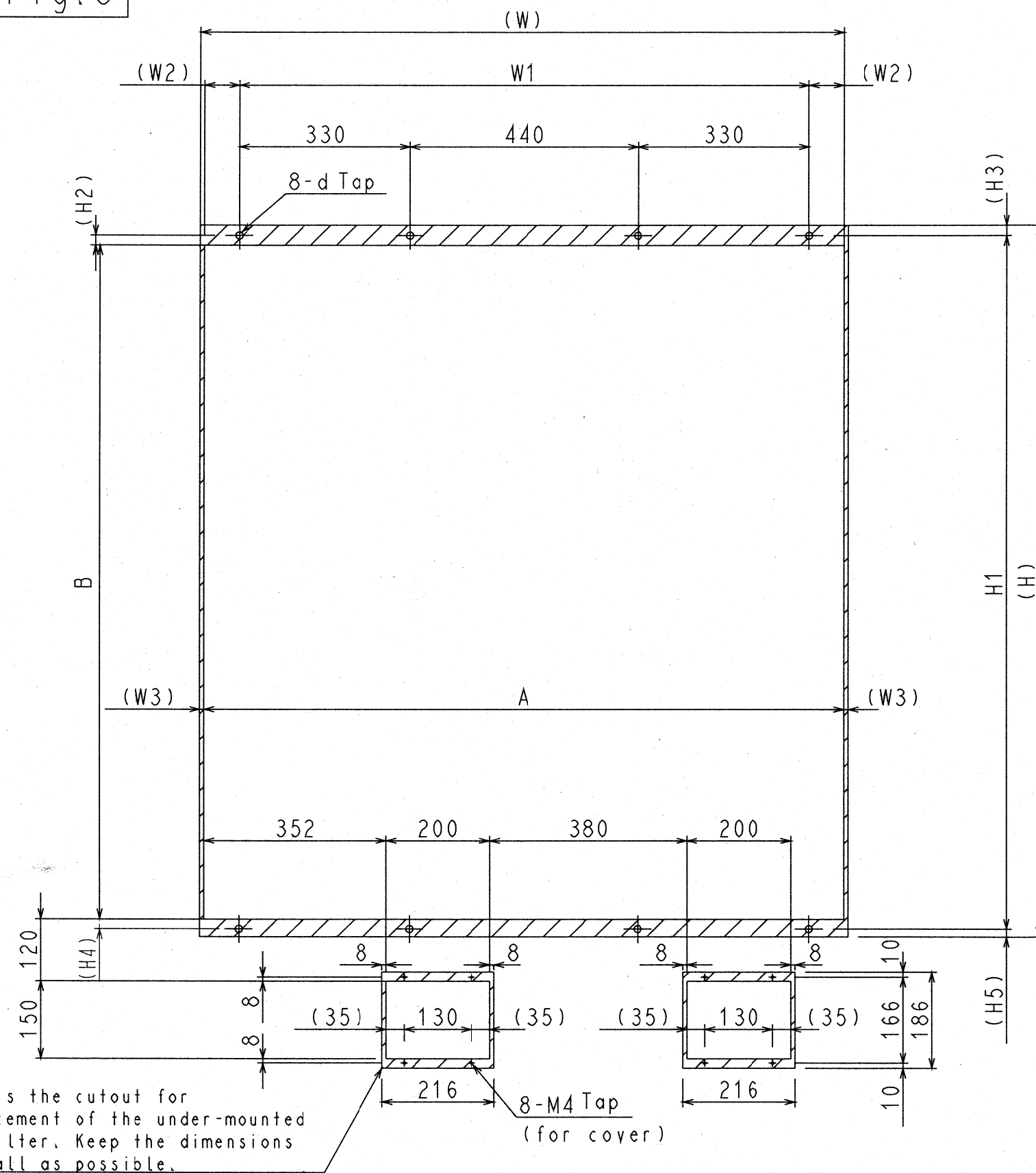


Fig.3



This is the cutout for replacement of the under-mounted air filter. Keep the dimensions as small as possible.

Attachment Code Number List

Inverter Model	Order Code	Product Code	Part Code			Mounting Screws
			Attachment 1	Attachment 2	Attachment 3	
CIMR-A□2A0004 0006 0008 0010 0012	100-047-226	72606 -EZZ020800A	SPAT35346-A	SPAT35347-A	SPAT35348-1	M4x10 pan-head screws+S+W(2) M5x10 pan-head screws+S+W(4)
CIMR-A□2A0018 0021 0030 0040	100-047-227	72606 -EZZ020800B	SPAT35349-A	SPAT35350-A	SPAT35348-1	M4x10 pan-head screws+S+W(2) M5x10 pan-head screws+S+W(4)
CIMR-A□2A0056	100-047-228	72606 -EZZ020800C	SPAT35351-A	SPAT35352-A	SPAT35353-1	M4x10 pan-head screws+S+W(2) M5x10 pan-head screws+S+W(4)
CIMR-A□2A0069 0081	100-047-229	72606 -EZZ020800D	SPAT35354-A	SPAT35355-A	SPAT35356-1	M4x10 pan-head screws+S+W(2) M6x14 pan-head screws+S+W(4)
CIMR-A□4A0002 0004 0005	100-047-226	72606 -EZZ020800A	SPAT35346-A	SPAT35347-A	SPAT35348-1	M4x10 pan-head screws+S+W(2) M5x10 pan-head screws+S+W(4)
CIMR-A□4A0007 0009 0011 0023 0018	100-047-227	72606 -EZZ020800B	SPAT35349-A	SPAT35350-A	SPAT35348-1	M4x10 pan-head screws+S+W(2) M5x10 pan-head screws+S+W(4)
CIMR-A□4A0031 0038	100-047-228	72606 -EZZ020800C	SPAT35351-A	SPAT35352-A	SPAT35353-1	M4x10 pan-head screws+S+W(2) M5x10 pan-head screws+S+W(4)
CIMR-A□4A0044	100-047-229	72606 -EZZ020800D	SPAT35354-A	SPAT35355-A	SPAT35356-1	M4x10 pan-head screws+S+W(2) M6x14 pan-head screws+S+W(4)