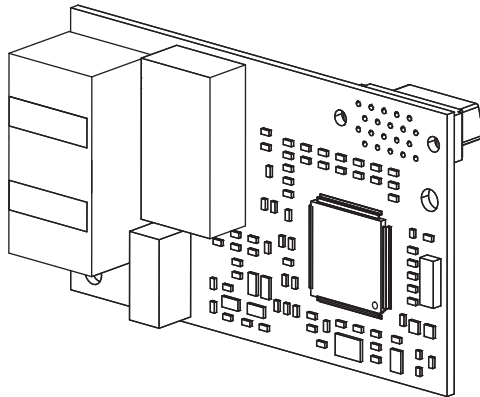


YASKAWA AC Drive 1000-Series Option Modbus TCP/IP Installation Manual

Type: SI-EM3D

To properly use the product, read this manual thoroughly and retain for easy reference, inspection, and maintenance. Ensure the end user receives this manual.



This Page Intentionally Blank

Copyright © 2014 YASKAWA AMERICA, INC. All rights reserved.

All rights reserved. No part of this publication may be reproduced, stored in a retrieval system, or transmitted, in any form or by any means, mechanical, electronic, photocopying, recording, or otherwise, without the prior written permission of Yaskawa. No patent liability is assumed with respect to the use of the information contained herein. Moreover, because Yaskawa is constantly striving to improve its high-quality products, the information contained in this manual is subject to change without notice. Every precaution has been taken in the preparation of this manual. Yaskawa assumes no responsibility for errors or omissions. Neither is any liability assumed for damages resulting from the use of the information contained in this publication.

Table of Contents

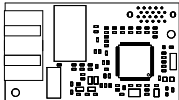
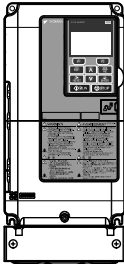
1	PREFACE AND SAFETY.....	4
2	PRODUCT OVERVIEW.....	8
3	RECEIVING.....	9
4	OPTION COMPONENTS.....	10
5	INSTALLATION PROCEDURE.....	14
6	RELATED DRIVE PARAMETERS.....	24
7	MODBUS TCP/IP MESSAGING.....	28
8	WEB INTERFACE.....	35
9	RAPID SPANNING TREE PROTOCOL.....	41
10	TROUBLESHOOTING.....	42
11	SPECIFICATIONS.....	48

1 Preface and Safety

Yaskawa manufactures products used as components in a wide variety of industrial systems and equipment. The selection and application of Yaskawa products remain the responsibility of the equipment manufacturer or end user. Yaskawa accepts no responsibility for the way its products are incorporated into the final system design. Under no circumstances should any Yaskawa product be incorporated into any product or design as the exclusive or sole safety control. Without exception, all controls should be designed to detect faults dynamically and fail safely under all circumstances. All systems or equipment designed to incorporate a product manufactured by Yaskawa must be supplied to the end user with appropriate warnings and instructions as to the safe use and operation of that part. Any warnings provided by Yaskawa must be promptly provided to the end user. Yaskawa offers an express warranty only as to the quality of its products in conforming to standards and specifications published in the Yaskawa manual. **NO OTHER WARRANTY, EXPRESS OR IMPLIED, IS OFFERED.** Yaskawa assumes no liability for any personal injury, property damage, losses, or claims arising from misapplication of its products.

◆ Applicable Documentation

The following manuals are available for the SI-EM3D option:

	<p>Yaskawa AC Drive 1000-Series Option SI-EM3D Dual-Port Modbus TCP/IP Installation Manual (TOEPYAICOM18)</p> <p>The Installation Manual contains information required to install the option and set up related drive parameters.</p> <p>Yaskawa AC Drive 1000-Series Option SI-EM3D Dual-Port Modbus TCP/IP Technical Manual (SIEPYAICOM18)</p> <p>The Technical Manual contains detailed information about the option. In the U.S., access http://www.yaskawa.com to obtain the Technical Manual. Customers in other areas should contact a Yaskawa representative.</p>
	<p>1000-Series AC Drive Safety Precautions</p> <p>Read this manual first. This manual contains essential safety information and simplified information for the drive. This document also provides basic instructions on mechanical installation, a connection diagram, main circuit and control circuit connections, switch and jumper configuration, basic troubleshooting, standards compliance and fusing, drive specifications, and an abbreviated parameter list.</p> <p>1000-Series AC Drive Quick Start Guide</p> <p>This guide contains basic information required to install and wire the drive. It also gives an overview of fault diagnostics, maintenance, and parameter settings. The purpose of this guide is to prepare the drive for a trial run with an application and for basic operation. This manual is available for download on our documentation website, www.yaskawa.com.</p> <p>1000-Series AC Drive Technical Manual</p> <p>This manual provides detailed information on parameter settings, drive functions, and MEMOBUS/Modbus specifications. Use this manual to expand drive functionality and to take advantage of higher performance features. This manual is available for download on our documentation website, www.yaskawa.com.</p>

◆ Terms

Note: Indicates supplemental information that is not related to safety messages.

Drive: Yaskawa 1000-Series AC Drive

Option: Yaskawa AC Drive 1000-Series SI-EM3D Dual-Port Modbus TCP/IP Option

◆ Registered Trademarks

- Modbus TCP/IP is a trademark of Modbus-IDA.
 - All trademarks are the property of their respective owners.
-

◆ Supplemental Safety Information

Read and understand this manual before installing, operating, or servicing this option. The option must be installed according to this manual and local codes.

The following conventions are used to indicate safety messages in this manual. Failure to heed these messages could result in serious or possibly even fatal injury or damage to the products or to related equipment and systems.

DANGER

Indicates a hazardous situation, which, if not avoided, will result in death or serious injury.

WARNING

Indicates a hazardous situation, which, if not avoided, could result in death or serious injury.

WARNING! *may also be indicated by a bold key word embedded in the text followed by an italicized safety message.*

CAUTION

Indicates a hazardous situation, which, if not avoided, could result in minor or moderate injury.

CAUTION! *may also be indicated by a bold key word embedded in the text followed by an italicized safety message.*

1 Preface and Safety

NOTICE

Indicates a property damage message.

NOTICE: *may also be indicated by a bold key word embedded in the text followed by an italicized safety message.*

■ General Safety

General Precautions

- The diagrams in this manual may be indicated without covers or safety shields to show details. Replace the covers or shields before operating the drive and run the drive according to the instructions described in this manual.
- Any illustrations, photographs, or examples used in this manual are provided as examples only and may not apply to all products to which this manual is applicable.
- The products and specifications described in this manual or the content and presentation of the manual may be changed without notice to improve the product and/or the manual.
- When ordering a new copy of the manual due to damage or loss, contact your Yaskawa representative or the nearest Yaskawa sales office and provide the manual number shown on the front cover.
- If nameplate becomes worn or damaged, order a replacement from your Yaskawa representative or the nearest Yaskawa sales office.

DANGER

Heed the safety messages in this manual.

Failure to comply will result in death or serious injury.

The operating company is responsible for any injuries or equipment damage resulting from failure to heed the warnings in this manual.

Electrical Shock Hazard

Do not connect or disconnect wiring while the power is on.

Failure to comply will result in death or serious injury.

Failure to comply will result in death or serious injury. Before servicing, disconnect all power to the equipment. The internal capacitor remains charged even after the power supply is turned off. The charge indicator LED will extinguish when the DC bus voltage is below 50 Vdc. To prevent electric shock, wait for at least the time specified on the warning label once all indicators are OFF, and then measure the DC bus voltage level to confirm it has reached a safe level.

NOTICE

Observe proper electrostatic discharge procedures (ESD) when handling the drive and circuit boards.

Failure to comply may result in ESD damage to the drive circuitry.

Do not perform a withstand voltage test on any part of the drive.

Failure to comply could result in damage to the sensitive devices within the drive.

Do not operate damaged equipment.

Failure to comply could result in further damage to the equipment.

Do not connect or operate any equipment with visible damage or missing parts.

Do not expose the drive to halogen group disinfectants.

Failure to comply may cause damage to the electrical components in the drive.

Do not pack the drive in wooden materials that have been fumigated or sterilized.

Do not sterilize the entire package after the product is packed.

2 Product Overview

◆ About this Product

This option provides a communications connection between the drive and a Modbus TCP/IP network. The option connects the drive to a Modbus TCP/IP network and facilitates the exchange of data.

This manual explains the handling, installation and specifications of this product.

The option is a communications link to connect industrial devices (such as smart motor controllers, operator interfaces, and variable frequency drives) as well as control devices (such as programmable controllers and computers) to a network. The option is a simple, networking solution that reduces the cost and time to wire and install factory automation devices, while providing interchangeability of like components from multiple vendors.

By installing the option to a drive, it is possible to do the following from a Modbus TCP/IP master device:

- Operate the drive
- Monitor drive status
- Change drive parameter settings.



◆ Applicable Models

The option can be used with the drive models in [Table 1](#).

Table 1 Applicable Models

Drive Series	Model Number	Software Version <1>
A1000	CIMR-A□2A□□□□	1010 and later
	CIMR-A□4A0002□ to 4A0675□	
	CIMR-A□4A0930 and 4A1200	301□
	CIMR-A□5A□□□□	504□; 1017 and later
D1000	CIMR-D□2A0005□ to 4A0370□	2600 and later
	CIMR-D□4A0630□	301□ and later
R1000	CIMR-R□2A03P5□ to 4A0300□	2102 and later

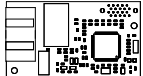

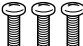


<1> See “PRG” on the drive nameplate for the software version number.

3 Receiving

Please perform the following tasks upon receipt of the option:

- Inspect the option for damage. Contact the shipper immediately if the option appears damaged upon receipt.
- Verify receipt of the correct model by checking the model number printed on the name plate of the option package.
- Contact your supplier if you have received the wrong model or the option does not function properly.

◆ Option Package Contents

Description	Option	Ground Wire	Screws (M3)	LED Label	Installation Manual
–					
Quantity	1	1	3	1	1

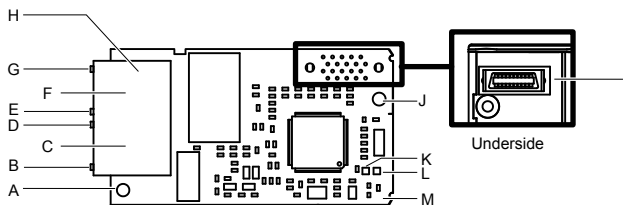
◆ Tools Required for Installation

- A Phillips screwdriver (M3 metric or #1, #2 U.S. standard) is required to install the option and remove drive front covers. Screw sizes vary by drive capacity. Select a screwdriver appropriate for the drive capacity.
- Diagonal cutting pliers. (required for some drive models)
- A small file or medium grit sandpaper. (required for some drive models)

Note: Tools required to prepare the option cables for wiring are not listed in this manual.

4 Option Components

◆ SI-EM3D Dual-Port Modbus TCP/IP Option



- | | |
|--|--|
| A – Ground terminal and installation hole <1> | H – Modbus TCP/IP cable connector |
| B – Port 2 LED (10/100) <2> | I – Option connector |
| C – Port 2 | J – Installation hole |
| D – Port 2 LED (LINK/ACT) <2> | K – LED (NS) <2> |
| E – Port 1 LED (10/100) <2> | L – LED (MS) <2> |
| F – Port 1 | M – Modbus TCP/IP PCB |
| G – Port 1 LED (LINK/ACT) <2> | |

Figure 1 Option Components

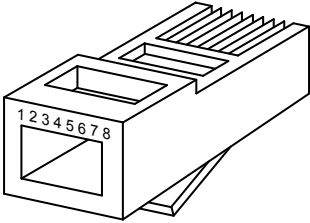
- <1> The ground wire is packaged loose in the option shipping package. Connect this ground wire during installation.
- <2> [Refer to Option LED Display on page 12](#) for details on the LEDs.

◆ Communication Connector CN1

The communication connector on the option is a modular RJ45 female connector designated CN1.

CN1 is the connection point for a customer-supplied male Modbus network communication cable.

Table 2 Male, 8-Way Modular Connector (Customer-Supplied)

Male 8-Way Modular Connector	Pin	Description
 <p>Latch release</p>	1 (Pair 2)	Transmit data (TXD) +
	2 (Pair 2)	Transmit data (TXD) -
	3 (Pair 3)	Receive data (RXD) +
	4 (Pair 1)	Not used <I>
	5 (Pair 1)	Not used <I>
	6 (Pair 3)	Receive data (RXD) -
	7 (Pair 4)	Not used <I>
	8 (Pair 4)	Not used <I>

<I> Not used for 10 Mbps and 100 Mbps networks.

◆ Option LED Display

The option has four LEDs.

Bi-color Status LEDs:

- Module status (MS) red/green
- Network status (NS) red/green

Ethernet LEDs:

- Network speed - 10/100 (MS) green
- Link status and network activity - LINK/ACT (NS) red/green

The operational states of the option LEDs after completion of the power-up diagnostic LED sequence are described in [Table 3](#). Wait at least 2 seconds for the power-up diagnostic process to complete before verifying LED states.

Table 3 Option LED States

Name	Display		Operating Status	Remarks
	Color	Status		
MS	–	OFF	Power supply OFF	Power is not being supplied to the drive.
	Green	ON	Normal operation	The option is operating normally and initialization is complete.
	Green	Flashing	Standby/Initializing	The option is in process of configuring or waiting for configuration information.
	Red	Flashing	Non-fatal error occurred	The option has detected a recoverable minor fault such as incomplete configuration.
	Red	ON	Fatal error occurred	The option has detected an unrecoverable major fault.
NS	–	OFF	Power supply OFF or no network connection established.	–
	Green	ON	Online communications established	The option is online and has established connections.
	Green	Flashing	Control communications established	The option is online with a control connection.
	Red	ON	Major fault	The option detected a duplicate IP address or the control connection timed out.

Name	Display		Operating Status	Remarks
	Color	Status		
10/100 < >	Green	OFF	10 Mbps is established	
	Green	ON	100 Mbps is established	
LINK/ACT < >	Green	OFF	LINK is not established	
	Green	ON	LINK is established	
	Green	Flashing	LINK is established and there is network activity.	

<|> Remove the cover to check the status of the LED. Be careful not to touch the main circuit terminals or the control board in the drive.

5 Installation Procedure

◆ Section Safety

DANGER

Electrical Shock Hazard

Do not connect or disconnect wiring while the power is on.

Failure to comply will result in death or serious injury.

Disconnect all power to the drive and wait at least the amount of time specified on the drive front cover safety label. After all indicators are off, measure the DC bus voltage to confirm safe level, and check for unsafe voltages before servicing. The internal capacitor remains charged after the power supply is turned off.

WARNING

Electrical Shock Hazard

Do not remove the front covers of the drive while the power is on.

Failure to comply could result in death or serious injury.

The diagrams in this section may include options and drives without covers or safety shields to show details. Be sure to reinstall covers or shields before operating any devices. The option should be used according to the instructions described in this manual.

Do not allow unqualified personnel to use equipment.

Failure to comply could result in death or serious injury.

Maintenance, inspection, and replacement of parts must be performed only by authorized personnel familiar with installation, adjustment, and maintenance of this product.

Do not touch circuit boards while the power is on.

Failure to comply could result in death or serious injury.

Do not use damaged wires, stress the wiring, or damage the wire insulation.

Failure to comply could result in death or serious injury.

Do not use damaged wires, place excessive stress on wiring, or damage the wire insulation.

Failure to comply could result in death or serious injury.

WARNING

Fire Hazard

Tighten all terminal screws to the specified tightening torque.

Loose electrical connections could result in death or serious injury by fire due to overheating of electrical connections.

NOTICE

Observe proper electrostatic discharge procedures (ESD) when handling the drive and circuit boards.

Failure to comply may result in ESD damage to the drive circuitry.

Never shut the power off while the drive is outputting voltage.

Failure to comply may cause the application to operate incorrectly or damage the drive.

Do not operate damaged equipment.

Failure to comply may cause further damage to the equipment.

Do not connect or operate any equipment with visible damage or missing parts.

Do not use unshielded cable for control wiring.

Failure to comply may cause electrical interference resulting in poor system performance.

Use shielded twisted-pair wires and ground the shield to the ground terminal of the drive.

Properly connect all pins and connectors.

Failure to comply may prevent proper operation and possibly damage equipment.

Check wiring to ensure that all connections are correct after installing the option and connecting any other devices.

Failure to comply could result in damage to the option.

◆ Prior to Installing the Option

Prior to installing the option, wire the drive, make necessary connections to the drive terminals, and verify that the drive functions normally without the option installed. Refer to the drive Quick Start Guide for information on wiring and connecting the drive.

Figure 2 shows an exploded view of the drive with the option and related components for reference.

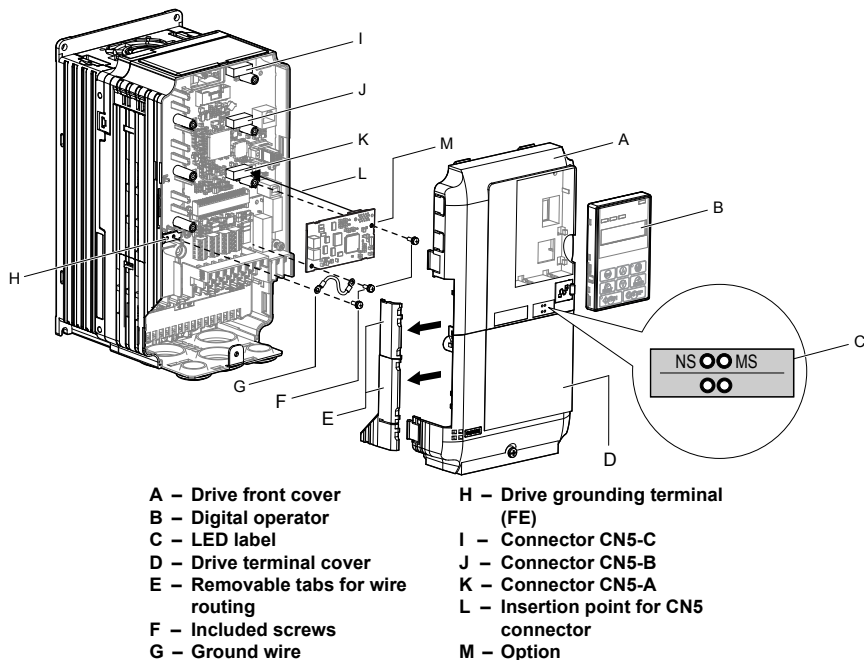


Figure 2 Drive Components with Option

◆ Installing the Option

Remove the front covers of the drive before installing the option. Refer to the drive Quick Start Guide for directions on removing the front covers. Cover removal varies depending on drive size. This option can only be inserted into the CN5-A connector located on the drive control board.

DANGER! DANGER! Electrical Shock Hazard. Do not connect or disconnect wiring while the power is on. Failure to comply could result in death or serious injury. Before installing the option, disconnect all power to the drive and wait at least the amount of time specified on the drive front cover safety label. After all indicators are off, measure the DC bus voltage to confirm safe level, and check for unsafe voltages before servicing. The internal capacitor remains charged after the power supply is turned off.

1. Shut off power to the drive, wait the appropriate amount of time for voltage to dissipate, then remove the digital operator (B) and front covers (A, D). Front cover removal varies by model.

NOTICE: Damage to Equipment. Observe proper electrostatic discharge procedures (ESD) when handling the option, drive, and circuit boards. Failure to comply may result in ESD damage to circuitry.

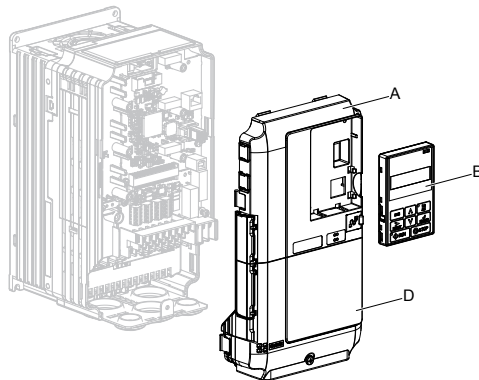


Figure 3 Remove the Front Covers and Digital Operator

2. With the front covers and digital operator removed, apply the LED label (C) in the appropriate position on the drive top front cover (A).

5 Installation Procedure

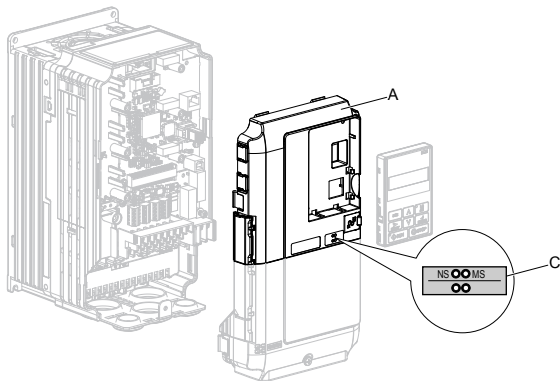


Figure 4 Apply the LED Label

3. Make sure the screws on the left and right sides of the option terminal block (J) are tightened with a tightening torque of 0.5 to 0.6 Nm (4.4 to 5.3 in lbs), then insert the option (B) into the **CN5-A** connector (L) located on the drive and fasten it using one of the included screws (H).

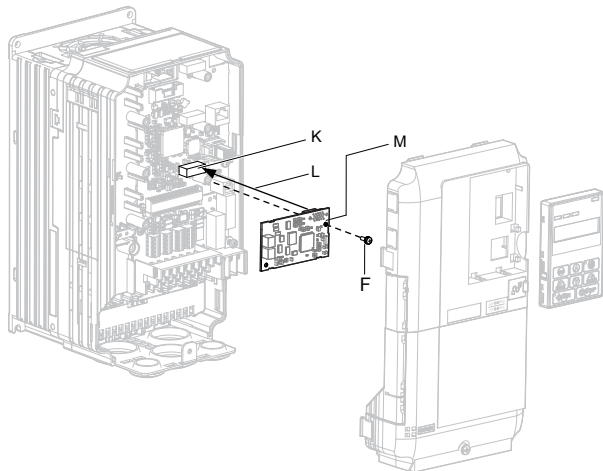


Figure 5 Insert the Option

4. Connect the ground wire (I) to the ground terminal (K) using one of the remaining provided screws (H). Connect the other end of the ground wire (I) to the remaining ground terminal and installation hole on the option (B) using the last remaining provided screw (H) and tighten both screws to 0.5 to 0.6 N·m (4.4 to 5.3 in lbs).

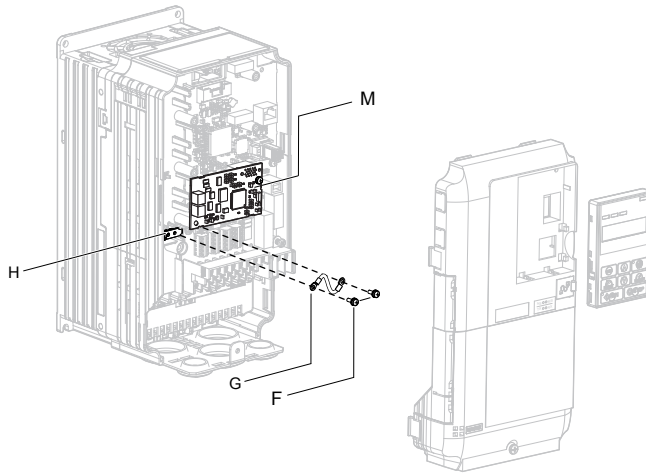


Figure 6 Connect the Ground Wire

Note: There are two screw holes on the drive for use as ground terminals. When connecting three options, two ground wires will need to share the same drive ground terminal.

5. Route the option wiring.

Depending on the drive model, some drives may require routing the wiring through the side of the front cover to the outside to provide adequate space for the wiring. Refer to the Peripheral Devices & Options section of the drive Quick Start Guide or Technical Manual for more information on wire routing of specific models.

Route the wiring through the side of the front cover to the outside. In these cases, using diagonal cutting pliers, cut out the perforated openings on the left side of the drive front cover as shown in [Figure 7-A](#). Use a file or sandpaper to make the sharp edges along the cutout smoother to prevent any damage to the wires. Route the wiring inside the enclosure as shown in [Figure 7-B](#) for drives that do not require routing through the front cover.

Note: Separate communication cables from main circuit wiring and other electrical lines.

5 Installation Procedure

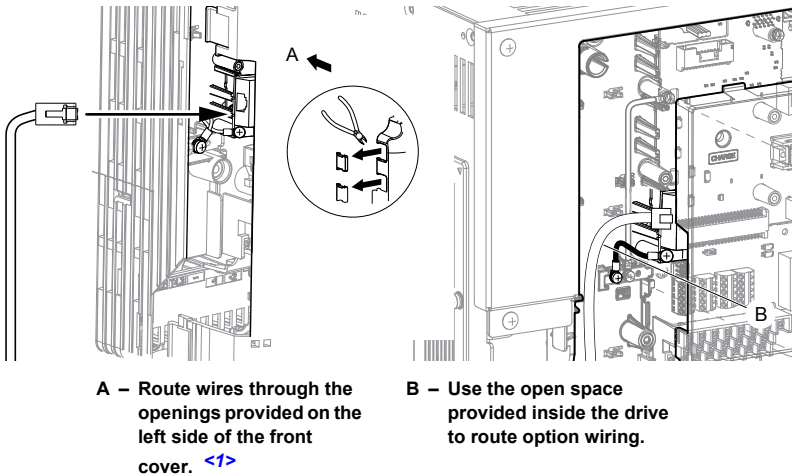


Figure 7 Wire Routing Examples

<1> The drive will not meet NEMA Type 1 requirements if wiring is exposed outside the enclosure.

6. Connect the communication cable to the option modular connector (CN1) port 1.
To connect the option to a network, firmly connect RJ45 8-pin shielded twisted pair Cat5e cable(s) into the modular connector ports (see [Figure 7](#)).

Communication Cable Specifications

Only use cable recommended for Modbus TCP/IP. Using a cable not specifically recommended may cause the option or drive to malfunction.

The dual RJ45 network ports on the option board act as a switch to allow for flexibility in cabling topology. For example, a traditional star network topology may be employed by using a single port on the option board. Alternatively, a daisy-chained approach may be employed by using both RJ45 ports. The daisy-chained approach reduces the requirements of central switch ports. A ring topology is also possible. When implementing a ring topology, Rapid Spanning Tree Protocol (RSTP) must be enabled to function correctly.

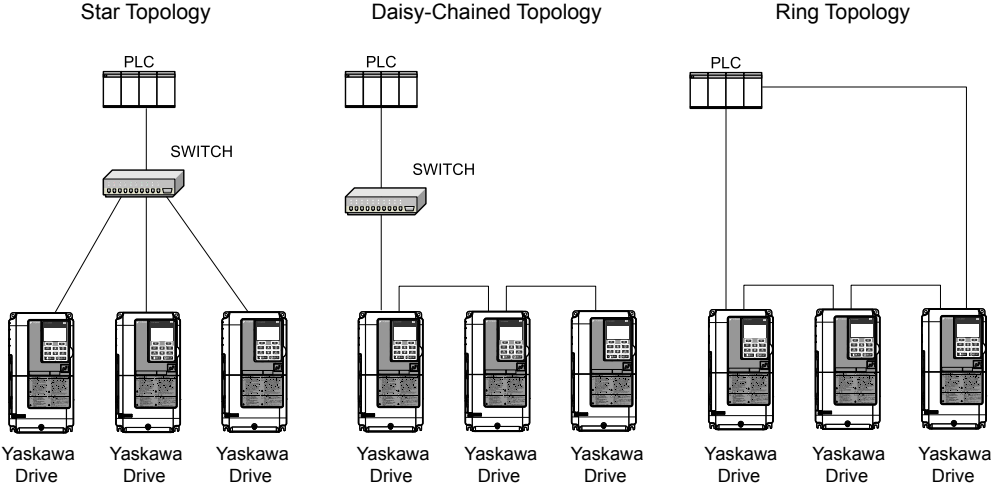


Figure 8 Topology Options

5 Installation Procedure

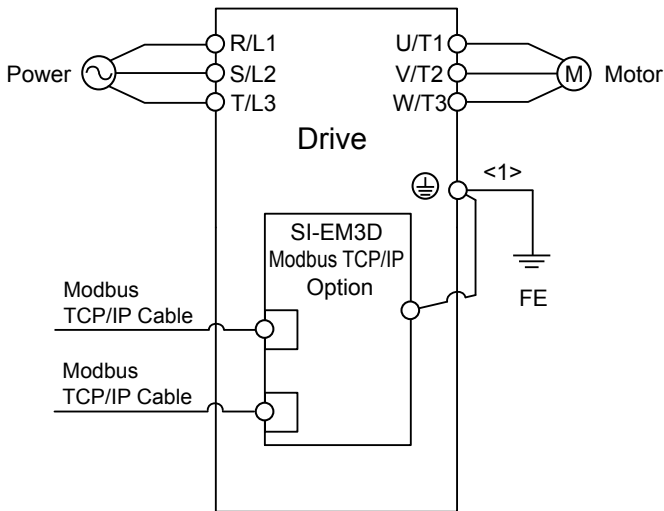


Figure 9 Option Connection Diagram

- 7.** Use the second communication cable port to daisy chain a series of drives where applicable.
- 8.** Replace and secure the front covers of the drive (A, D) and replace the digital operator (B).

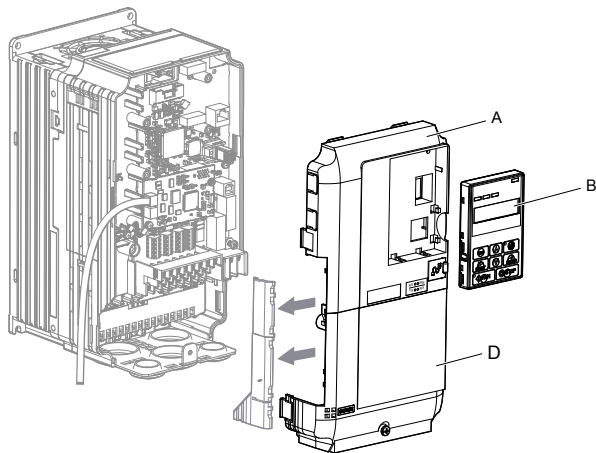


Figure 10 Replace the Front Covers and Digital Operator

Note: Take proper precautions when wiring the option so that the front covers will easily fit back onto the drive. Make sure no cables are pinched between the front covers and the drive when replacing the covers.

9. Set drive parameters in [Table 4](#) for proper option performance.

6 Related Drive Parameters

The following parameters are used to set up the drive for operation with the option. Parameter setting instructions can be found in the drive manual.

Confirm proper setting of the parameters in [Table 4](#) before starting network communications. After changing parameter settings, cycle power to the drive for the new settings to take effect.

Table 4 Related Parameters

No. (Addr. Hex)	Name	Description	Values
b1-01 (0180) </>	Frequency Reference Selection 1	0: Digital operator 1: Analog input terminals 2: MEMOBUS/Modbus communications 3: Option PCB 4: Pulse input (terminal RP)	Default: 1 Range: 0 to 4
b1-02 (0181) </>	Run Command Selection 1	0: Digital operator 1: Digital input terminals 2: MEMOBUS/Modbus communications 3: Option PCB	Default: 1 Range: 0 to 3
F6-01 (03A2)	Communications Error Operation Selection	0: Ramp to stop. Decelerate to stop using the deceleration time in C1-02. 1: Coast to stop 2: Fast Stop. Decelerate to stop using the deceleration time in C1-09. 3: Alarm only </> 4: Alarm (d1-04) </> 5: Alarm Ramp to Stop </>	Default: 1 Range: 0 to 3
F6-02 (03A3)	External Fault from Comm. Option Detection Selection	1: Detection during run only	Default: 0 Range: 0, 1
F6-03 (03A4)	External Fault from Comm. Option Operation Selection	0: Ramp to stop. Decelerate to stop using the deceleration time in C1-02. 1: Coast to stop 2: Fast Stop. Decelerate to stop using the deceleration time in C1-09. 3: Alarm only </>	Default: 1 Range: 0 to 3
F6-06 (03A7) </>	Torque Reference/Torque Limit Selection from Comm. Option	0: Disabled. Torque reference/limit from option board disabled. 1: Enabled. Torque reference/limit from option board enabled. </>	Default: 0 Range: 0, 1
F6-07 (03A8)	Multi-Step Speed Enable/Disable Selection when NefRef/ComRef is Selected	0: Multi-step reference disabled (same as F7) 1: Multi-step reference enabled (same as V7)	Default: 0 Range: 0, 1

6 Related Drive Parameters

No. (Addr. Hex)	Name	Description	Values
F6-08 (036A) <6>	Reset Communication Parameters	0: Communication-related parameters (F6-□□/□□) are not reset when the drive is initialized using A1-03. 1: Reset all communication-related parameters (F6-□□/□□) when the drive is initialized using A1-03.	Default: 0 Range: 0, 1
F6-14 (03BB)	bUS Error Auto Reset	0: Disabled 1: Enabled	Default: 0 Range: 0, 1
F7-01 (03E5) <7>	IP Address 1	Sets the most significant octet of network static IP address.	Default: 192 Range: 0 to 255
F7-02 (03E6) <7>	IP Address 2	Sets the second most significant octet of network static IP address.	Default: 168 Range: 0 to 255
F7-03 (03E7) <7>	IP Address 3	Sets the third most significant octet of network static IP address.	Default: 1 Range: 0 to 255
F7-04 (03E8) <7>	IP Address 4	Sets the fourth most significant octet of network static IP address.	Default: 20 Range: 0 to 255
F7-05 (03E9)	Subnet Mask 1	Sets the most significant octet of network static Subnet Mask.	Default: 255 Range: 0 to 255
F7-06 (03EA)	Subnet Mask 2	Sets the second most significant octet of network static Subnet Mask.	Default: 255 Range: 0 to 255
F7-07 (03EB)	Subnet Mask 3	Sets the third most significant octet of network static Subnet Mask.	Default: 255 Range: 0 to 255
F7-08 (03EC)	Subnet Mask 4	Sets the fourth most significant octet of network static Subnet Mask.	Default: 0 Range: 0 to 255
F7-09 (03ED)	Gateway Address 1	Sets the most significant octet of network Gateway address.	Default: 192 Range: 0 to 255
F7-10 (03EE)	Gateway Address 2	Sets the second most significant octet of network Gateway address.	Default: 168 Range: 0 to 255
F7-11 (03EF)	Gateway Address 3	Sets the third most significant octet of network Gateway address.	Default: 1 Range: 0 to 255
F7-12 (03E0)	Gateway Address 4	Sets the fourth most significant octet of network Gateway address.	Default: 1 Range: 0 to 255
F7-13 (03F1)	Address Mode at Startup	Select the option address setting method 0: Static <8> 1: BOOTP 2: DHCP	Default: 2 Range: 0 to 2

6 Related Drive Parameters

No. (Addr. Hex)	Name	Description	Values
F7-14 (03F2)	Duplex Mode Selection	Selects duplex mode setting. 0: Half duplex forced <9> 1: Auto-negotiate duplex mode and communication speed 2: Full duplex forced <9> 3: Half (port 1)/Auto (port 2) 4: Half (Port 1)/Full (port 2) 5: Auto (port 1)/Half (port 2) 6: Auto (port 1)/Full (port 2) 7: Full (port 1)/Half (port 2) 8: Full (port 1)/Auto (port 2)	Default: 1 Range: 0 to 8 <10>
F7-15 (03F3)	Communication Speed Selection	Sets the communication speed 10: 10 Mbps 100: 100 Mbps 101: 10 (Port 1)/100 Mbps (port 2) 102: 100 (Port 1)/10 Mbps (port 2)	Default: 10 Range: 10; 100 to 102 <11>
F7-16 (03F4)	Communication Loss Timeout	Sets the timeout value for communication loss detection in tenths of a second. A value of 0 disables the connection timeout. Example: An entered value of 100 represents 10.0 seconds.	Default: 0.0 Min.: 0.0 Max.: 30.0
F7-23 to F7-32 (03FB to 0374)	Dynamic Output Assembly Parameters	Parameters used in Output Assembly 116. Each parameter contains a MEMOBUS/Modbus address. The value received for Output Assembly 116 will be written to this corresponding MEMOBUS/Modbus address. A MEMOBUS/Modbus address value of 0 means that the value received for Output Assembly 116 will not be written to any MEMOBUS/Modbus register.	Default: 0
F7-33 to F7-42 (0375 to 037E)	Dynamic Input Assembly Parameters	Parameters used in Input Assembly 166. Each parameter contains a MEMOBUS/Modbus address. The value sent for Input Assembly 166 will be read from this corresponding MEMOBUS/Modbus address. A MEMOBUS/Modbus address value of 0 means that the value sent for Input Assembly 166 is not defined by the user, therefore the option default register value will be returned.	Default: 0
H5-11 (043C)	Communications ENTER Function Selection	Select the function for the ENTER command that saves parameter data to the drive. 0: Drive requires an Enter command before accepting any changes to parameter settings. 1: Parameter changes are activated immediately without the Enter command.	Default: 0 Range: 0, 1

- <1> To start and stop the drive with the master device using serial communications, set b1-02 to 3. To control the drive frequency reference of the drive via the master device, set b1-01 to 3.
- <2> When set to 3, 4, or 5, the drive will continue to operate when a fault is detected. Take safety measures, such as installing an emergency stop switch.
- <3> Available in drive software versions PRG: 1021 and later.
- <4> Enabled in CLV, AOLV/PM, and CLV/PM control modes (A1-02 = 3, 6, or 7). When enabled, d5-01 determines whether the value is read as the Torque Limit value (d5-01 = 0) or read as the Torque Reference value (d5-01 = 1). In CLV/PM, this value is read as the Torque Limit.

6 Related Drive Parameters

- <5> The setting specifies that the Torque Reference or Torque Limit is to be provided via network communications (F6-06 = 1). The motor may rotate if no torque reference or Torque Limit is supplied from the PLC.
- <6> Parameter setting value is not reset to the default value when the drive is initialized.
- <7> Cycle power for setting changes to take effect.
- <8> When F7-13 is set to 0, parameters F7-01 to F7-12 must be set, and all IP Addresses (as defined with parameters F7-01 to F7-04) must be unique.
- <9> When F7-14 is set to 0 or 2, parameter F7-15 must be set.
- <10> Setting range differs depending on drive software version. PRG: 1020 and earlier, Range: 0 to 2
PRG: 1021 and later, Range: 0 to 8
- <11> Setting range differs depending on drive software version. PRG: 1020 and earlier, Range: 10, 100
PRG: 1021 and later, Range: 10; 100 to 102

Table 5 Option Monitors

No.	Name	Description	Value Range
U6-80 to U6-83	Online IP Address	IP Address currently available; U6-80 is the most significant octet	0 to 255
U6-84 to U6-87	Online Subnet	Subnet currently available; U6-84 is the most significant octet	0 to 255
U6-88 to U6-91	Online Gateway	Gateway currently available; U6-88 is the most significant octet	0 to 255
U6-92	Online Speed	Link Speed	10: 10 Mbps 100: 100 Mbps
U6-93	Online Duplex	Duplex Setting	0: Half, 1: Full
U6-94	Port 2 Speed	Port 2 Link Speed	0: Half, 1: Full
U6-95	Port 2 Duplex	Port 2 Duplex Setting	10: 10 Mbps 100: 100 Mbps
U6-96	RSTP	RSTP Role and State	0000 to 9292
U6-98	First Fault	First Option Fault	–
U6-99	Current Fault	Current Option Fault	–

7 Modbus TCP/IP Messaging

◆ Modbus TCP/IP Overview

The Modbus TCP/IP protocol is essentially the Modbus protocol over an Modbus TCP/IP network. A master controller (typically a PLC) sends commands to slave devices, which then perform the specified functions and send a response to the master. The drive using the option has slave functionality.

■ Supported Modbus TCP/IP Commands

Table 6 Supported Modbus TCP/IP Commands

Function Code	Function Name
03H	Read Multiple Registers
06H	Write Single Register
10H	Write Multiple Registers
17H	Read/Write Multiple Registers

■ Drive Modbus TCP/IP Option Registers

All of the command registers, monitor registers, and parameters documented in the drive Technical Manual are accessible via the option.

■ High Speed Access Drive Modbus TCP/IP Option Registers

Many of the registers required for control have been specially mapped to provide higher speed access to increase network performance. Use these registers for the best response times.

All drive command registers have been mapped to this high speed access area (Modbus TCP/IP registers 01H to 01FH) as shown in [Table 7](#). In addition, the monitors shown in [Table 8](#) are mapped for high speed access.

It is possible to both read and write command data.

Note: Bits that are not used should be set to 0. Refrain from writing to reserved registers.

Table 7 Command Register Data

Register No.	Contents	
0000H	Reserved	
0001H	Operation Commands and Multi-function Inputs	
	bit 0	H5-12 = 0: Forward Run Command (0 = Stop, 1 = Forward Run) H5-12 = 1: Run Command (0 = Stop, 1 = Run)
	bit 1	H5-12 = 0: Reverse Run Command (0 = Stop, 1 = Reverse Run) H5-12 = 1: Forward/Reverse (0 = Forward, 1 = Reverse)
	bit 2	External Fault (EF0)
	bit 3	Fault Reset
	bit 4	Multi-Function Input 1 Function is ComRef when H1-01 = 40 (Forward/Stop). Note: When the bit at ComCtrl is turned on, commands from MEMOBUS/Modbus communications take control of the operation. However, when a communications option card is connected, that option card is given priority.
	bit 5	Multi-Function Input 2 Function is ComCtrl when H1-02 = 41 (Reverse/Stop).
	bit 6	Multi-Function Input 3
	bit 7	Multi-Function Input 4
	bit 8	Multi-Function Input 5
	bit 9	Multi-Function Input 6
	bit A	Multi-Function Input 7
	bit B	Multi-Function Input 8
bit C to F	Reserved	
0002H	Frequency Reference	Units are determined by parameter o1-03.
0003H	Output voltage gain Unit: 0.1% Range: 20 (2.0%) to 2000 (200.0%), Default when power on: 1000 (100.0%)	
0004H	Torque Reference/Torque Limit, 0.1% units, signed (Usable only if Torque Control is enabled)	
0005H	Torque Compensation, 0.1% units, signed (Usable only if Torque Control is enabled)	
0006H	PID Target, 0.01% units, signed	
0007H	Analog Output Terminal FM Setting (10 V / 4000 H)	
0008H	Analog Output Terminal AM Setting (10 V / 4000 H)	

7 Modbus TCP/IP Messaging

Register No.	Contents	
0009H	Settings for Multi-Function Digital Outputs	
	bit 0	Multi-Function Contact Output 1 (terminal M1-M2)
	bit 1	Multi-Function Contact Output 2 (terminal M3-M4)
	bit 2	Multi-Function Contact Output 3 (terminal M5-M6)
	bit 3 to 5	Reserved
	bit 6	Enables the function in bit 7
	bit 7	Fault Contact Output (terminal MA/MB-MC)
	bit 8 to F	Reserved
000AH	Pulse Output Terminal MP Setting, 1 Hz units, Setting Range: 0 to 32000	
000BH to 000EH	Reserved	
000FH	Control Selection Setting	
	bit 0	Reserved
	bit 1	PID Setpoint Input
	bit 2	Torque reference / torque limit input (enables the setting from MEMOBUS/Modbus)
	bit 3	Torque compensation input (enables the setting from MEMOBUS/Modbus)
	bit 4 to B	Reserved
	bit C	Enable Terminal S5 Input for Broadcast Data
	bit D	Enable Terminal S6 Input for Broadcast Data
	bit E	Enable Terminal S7 Input for Broadcast Data
bit F	Enable Terminal S8 Input for Broadcast Data	
0010H to 001AH	Reserved	
001BH	Analog Monitor Option AO-A3 Analog Output 1 (10 V/4000 H)	
001CH	Analog Monitor Option AO-A3 Analog Output 2 (10 V/4000 H)	
001DH	Digital Output Option DO-A3 Output (Binary)	
001EH to 001FH	Reserved	

Table 8 Drive Registers

Address (hex)	Drive Register (hex)	Description	Bit	Description
2000	4B	Status Word (U1-12)	0	During Run
			1	During Zero Speed
			2	During Reverse Direction
			3	During Fault Reset Signal Input
			4	During Speed Agree
			5	Drive Ready
			6	Alarm
			7	Fault
			8	During Operation Error (oPE□□)
			9	During Momentary Power Loss
			A	Motor 2 Selected
			B	Reserved
			C	Reserved
			D	Reserved
E	ComRef Status, NetRef Status			
F	ComCtrl Status, NetCtrl Status			
2001	44	Motor Speed Monitor (U1-05)		
2002	48	Torque Reference Monitor (U1-09)		
2003	F0	PG Count Channel 1		
2004	40	Frequency Reference Monitor (U1-01)		
2005	41	Output Frequency Monitor (U1-02)		
2006	26	Output Current (U1-03) 0.1 A		
2007	4F	Terminal A2 Input Level Monitor (U1-14)		
2008	46	DC Bus Voltage Monitor (U1-07)		

7 Modbus TCP/IP Messaging

Address (hex)	Drive Register (hex)	Description	Bit	Description
2009	C0	Error Signal 1	0	Reserved
			1	Undervoltage (Uv1)
			2	Control Power Supply Undervoltage (Uv2)
			3	Soft Charge Circuit Fault (Uv3)
			4	Reserved
			5	Ground Fault (GF)
			6	Overcurrent (oC)
			7	Overvoltage (ov)
			8	Heatsink Overheat (oH)
			9	Heatsink Overheat (oH1)
			A	Motor Overload (oL1)
			B	Drive Overload (oL2)
			C	Overtorque Detection 1 (oL3)
			D	Overtorque Detection 2 (oL4)
			E	Dynamic Braking Transistor Fault (rr)
			F	Braking Resister Overheat (rH)
200A	C1	Error Signal 2	0	External Fault at input terminal S3 (EF3)
			1	External Fault at input terminal S4 (EF4)
			2	External Fault at input terminal S5 (EF5)
			3	External Fault at input terminal S6 (EF6)
			4	External Fault at input terminal S7 (EF7)
			5	External Fault at input terminal S8 (EF8)
			6	Cooling fan Error (FAn)
			5	Reserved
			6	Reserved
			7	Overspeed (os)
			8	Excessive Speed Deviation (dEv)
			9	PG Disconnected (PGo)
			A	Input Phase Loss (PF)
			B	Output Phase Loss (LF)
			C	Motor Overheat (PTC input) (oH3)
			D	Digital Operator Connection Fault (oPr)
E	EEPROM Write Error (Err)			
F	Motor Overheat Fault (PTC input) (oH4)			

Address (hex)	Drive Register (hex)	Description	Bit	Description
200B	C2	Error Signal 3	0	MEMOBUS/Modbus Communication Error (CE)
			1	Option Communication Error (bUS)
			2	Reserved
			3	Reserved
			4	Control Fault (CF)
			5	Zero Servo Fault (SvE)
			5	Reserved
			6	Option External Fault (EF0)
			7	PID Feedback Loss (FbL)
			8	Undertorque Detection 1 (UL3)
			9	UL4 Undertorque Detection 2 (UL4)
			A	High Slip Braking Overload (oL7)
			B	Reserved
			C	Reserved
			D	Reserved
E	Reserved			
F	Hardware Fault (includes oFo)			
200C	4E	Terminal A1 Input Level Monitor (U1-13)		
200D	49	Digital Input Terminal Status (U1-10)		
200E	50	Terminal A3 Input Level Monitor (U1-15)		
200F	F1	PG Count Channel 2		
2010	4D	Drive Software Number (Flash) (U1-25)		

◆ Enter Command Types

The drive supports two types of Enter commands as shown in [Table 9](#). An Enter command is enabled by writing 0 to register number 0900H or 0910H. These registers can be written to only. An error will occur if the user attempts to read from these registers.

7 Modbus TCP/IP Messaging

Table 9 Enter Command Types

Register No.	Description
0900H	Writes data into the EEPROM (non-volatile memory) of the drive and enables the data in RAM at the same time. Parameter changes remain even if the power supply is cycled.
0910H	Writes data in the RAM only. Parameter changes are lost when the drive is shut off.

- Note:**
1. Because the EEPROM can be written to a maximum of 100,000 times, refrain from writing to the EEPROM too often. The Enter command registers are write-only. Consequently, if these registers are read, then the register address will be invalid (Error code: 02H). An Enter command is not required if reference or broadcast data are sent to the drive.
 2. Parameter data cannot be written to EEPROM during undervoltage, even using 0900H.
 3. If undervoltage occurs when a making several parameter changes issued with a single ENTER command, the writing process may be aborted before all of the new changes have been written. Because all of the data has not yet been written, the EEPROM data error “CPF06” will be displayed the next time power to the drive is cycled. To prevent this problem, wait approximately 5 seconds after issuing the ENTER command before shutting off drive power.

◆ Enter Command Settings when Upgrading the Drive

When replacing earlier Yaskawa drive models with a V1000 and keeping the MEMOBUS/Modbus communications settings, parameter H5-11 needs to be set in accordance with how the Enter command functions in the older drive. H5-11 determines if an Enter command is needed to activate parameter changes in the drive.

- Set H5-11 to 0 when upgrading from a G7 or F7 series drive to V1000 series drive.
- Set H5-11 to 1 when upgrading from a V7 series drive to V1000 series drive.

■ H5-11 and the Enter Command

H5-11 Settings	H5-11 = 0	H5-11 = 1
Drive being replaced	G7, F7	V7
How parameter settings are enabled	When the Enter command is received from the master.	As soon as the value is changed.
Upper/lower limit check	Upper/lower limit check takes the settings of related parameters into account.	The upper/lower limit of the changed parameter is checked only.
Default value of related parameters	Not affected. The settings of related parameters remain unchanged. They must be changed manually if needed.	The default settings of related parameters are changed automatically.
Error handling when setting multiple parameters	Data is accepted even if one setting is invalid. The invalid setting will be discarded. No error message occurs.	Error occurs if only one setting is invalid. All data sent are discarded.

8 Web Interface

The option contains a series of web pages that allow for viewing of status and diagnostic information through a standard web browser.

The web page is accessed through a self-contained web server at port 80. Access the home page by typing the IP address of the option in a web browser. Example: "http://192.168.1.20"

The IP address of the option can be read using monitors U6-80 to U6-83 on the digital operator if it is unknown. [Refer to Option Monitors on page 27](#) for details.

The home page is an HTML-based page providing basic drive and option data and a link to an enhanced web page requiring a Java© enabled web browser.

Enhanced Web Page Notes:

- The Enhanced Web Pages use a series of Java© applets.
- PCs must have Java SE 6 Update 14 or later installed to view the enhanced web pages.
- The Java© applets require an internet connection to check the revocation status.
- When no internet connection is available, disable the revocation check by changing a Java setting in the PC: All Programs / Java / Configure Java / Advanced Tab. Set "Perform certificate checks on" to "Do not check".

Enhanced Web Page Tab	Page
Main Tab	38
Drive Status Tab	39
Network Tab	Refer to the option Technical Manual for details on this tab.
Email Alerts Tab	Refer to the option Technical Manual for details on this tab.
Parameter Access Tab </>	Refer to the option Technical Manual for details on this tab.
Configuration Tab </>	Refer to the option Technical Manual for details on this tab.
Custom Tab	40

[</>](#) Accessible after entering a valid password.

◆ HTML Home Page

The main HTML home page provides basic drive and option data and a link to an enhanced web page. The RSTP enabled home page provides Rapid Spanning Tree Protocol data. [Refer to Rapid Spanning Tree Protocol on page 41](#) for details on RSTP.

■ Main HTML Home Page

YASKAWA

Refresh the page to update values.

MAIN RSTP

Main

Device Information	Network Status
Protocol: Modbus-TCP	Msg Tx OK: 13
IP Address: 192.168.1.20	Msg Rx Ok: 80
MAC ID: 00:20:B5:88:31:6B	Msg Tx Dropped: 0
Serial Number: 123001227	Msg Rx Dropped: 0
Product Name: SI-EM3D	Msg Tx Errors: 1
Option Firmware Version: VST800380	Msg Rx Errors: 1
Drive Model: CIMR-AA2A0004	Current Connections: 0
Drive Firmware Version: 01021	Collisions: 0
Profnet Station Name: N/A	Tx Retry: 0


[Launch Enhanced Website](#)

To run the "Enhanced Website", Java ® must be enabled in your browser. If a connection to the Internet is not available, a change in the Java configuration is required: set "All Programs / Java / Configure Java / Advanced Tab / Perform certificate checks on" to "Do not check".

Copyright © 2014 Yaskawa America, Inc.

Figure 11 Main HTML Home Page

■ RSTP Enabled HTML Home Page



Refresh the page to update values.

MAIN
RSTP

Rapid Spanning Tree Protocol

General

STP / RSTP ENABLED ▾

Priority 61440 ▾

Root Bridge 00:80:F4:09:32:4E

Hello Time (secs) 2

Forward Delay (secs) 21

Max Age (secs) 40

Save Changes

Port Information

Port 1 Role Root

Port 1 State Forwarding

Port 1 Version RSTP

Port 1 BPDU Rx Count 490

Port 2 Role Designated

Port 2 State Forwarding

Port 2 Version RSTP

Port 2 BPDU Rx Count 39

Copyright © 2014 Yaskawa America, Inc.

Figure 12 RSTP Enabled HTML Home Page

◆ Main Tab

The Main tab shows basic option information such as IP address, MAC address, and firmware version.

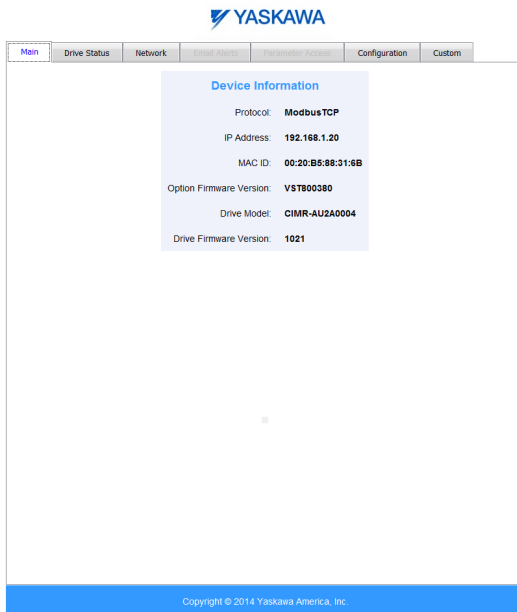


Figure 13 Main Tab View

◆ Drive Status Tab

The Drive Status tab shows basic I/O information and drive state information.

YASKAWA

Main	Drive Status	Network	Email Alerts	Parameter Access	Configuration	Custom																																										
<table border="1"> <thead> <tr> <th>Drive Status</th> <th>Drive Signals</th> <th>Fault Information</th> </tr> </thead> <tbody> <tr> <td>Status: Ready</td> <td>Frequency Ref: 0.0 Hz</td> <td>Active: None</td> </tr> <tr> <td>State: Stopped</td> <td>Output Frequency: 0.0 Hz</td> <td></td> </tr> <tr> <td>Direction: Forward</td> <td>Output Current: 0.0 A</td> <td></td> </tr> <tr> <td>Motor Speed: 0.0 Hz</td> <td>DC Bus Voltage: 344 V</td> <td></td> </tr> <tr> <td></td> <td>Torque Reference: +0%</td> <td></td> </tr> <tr> <th>Multi-function Inputs</th> <th>Multi-function Outputs</th> <th>Analog Input Signals</th> </tr> <tr> <td>Terminal S1: OFF</td> <td>Output MA - MC: OFF</td> <td>Input Terminal A1: 0%</td> </tr> <tr> <td>Terminal S2: OFF</td> <td>Output P1 - PC: OFF</td> <td>Input Terminal A2: 0%</td> </tr> <tr> <td>Terminal S3: OFF</td> <td>Output P2 - PC: OFF</td> <td></td> </tr> <tr> <td>Terminal S4: OFF</td> <td></td> <td></td> </tr> <tr> <td>Terminal S5: OFF</td> <td></td> <td></td> </tr> <tr> <td>Terminal S6: OFF</td> <td></td> <td></td> </tr> <tr> <td>Terminal S7: OFF</td> <td></td> <td></td> </tr> </tbody> </table>							Drive Status	Drive Signals	Fault Information	Status: Ready	Frequency Ref: 0.0 Hz	Active: None	State: Stopped	Output Frequency: 0.0 Hz		Direction: Forward	Output Current: 0.0 A		Motor Speed: 0.0 Hz	DC Bus Voltage: 344 V			Torque Reference: +0%		Multi-function Inputs	Multi-function Outputs	Analog Input Signals	Terminal S1: OFF	Output MA - MC: OFF	Input Terminal A1: 0%	Terminal S2: OFF	Output P1 - PC: OFF	Input Terminal A2: 0%	Terminal S3: OFF	Output P2 - PC: OFF		Terminal S4: OFF			Terminal S5: OFF			Terminal S6: OFF			Terminal S7: OFF		
Drive Status	Drive Signals	Fault Information																																														
Status: Ready	Frequency Ref: 0.0 Hz	Active: None																																														
State: Stopped	Output Frequency: 0.0 Hz																																															
Direction: Forward	Output Current: 0.0 A																																															
Motor Speed: 0.0 Hz	DC Bus Voltage: 344 V																																															
	Torque Reference: +0%																																															
Multi-function Inputs	Multi-function Outputs	Analog Input Signals																																														
Terminal S1: OFF	Output MA - MC: OFF	Input Terminal A1: 0%																																														
Terminal S2: OFF	Output P1 - PC: OFF	Input Terminal A2: 0%																																														
Terminal S3: OFF	Output P2 - PC: OFF																																															
Terminal S4: OFF																																																
Terminal S5: OFF																																																
Terminal S6: OFF																																																
Terminal S7: OFF																																																

Copyright © 2014 Yaskawa America, Inc.

Figure 14 Drive Status Tab View

◆ Custom Tab

The Custom tab displays a selection of quick setting parameters.

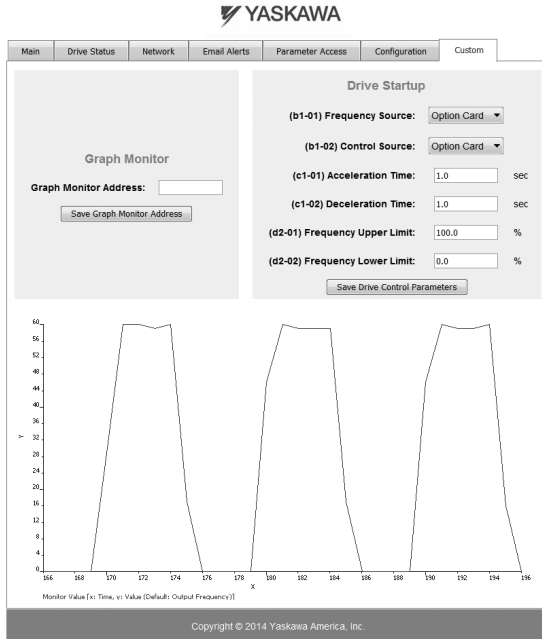


Figure 15 Custom Tab View

9 Rapid Spanning Tree Protocol

Rapid Spanning Tree Protocol (RSTP) is a mechanism that allows an Ethernet network to be configured as a ring or other topology that may have more than one pathway to each node. The RSTP protocol automatically determines the most efficient pathway to each node and disables any redundant pathways.

Refer to the option Technical Manual for a full description of RSTP features and functions.

10 Troubleshooting

◆ Drive-Side Error Codes

Drive-side error codes appear on the drive digital operator. Causes of the errors and corrective actions are listed below. Refer to the drive manual for additional error codes that may appear on the drive digital operator.

■ Faults

Both bUS (Option Communication Error) and EF0 (Option Card External Fault) can appear as an alarm or as a fault. When a fault occurs, the digital operator ALM LED remains lit. When an alarm occurs, the ALM LED flashes.

If communication stops while the drive is running, use the following questions as a guide to help remedy the fault:

- Is the option properly installed?
- Are the communication lines properly connected to the option? Are the wires loose?
- Is the controller program working? Has the controller/PLC CPU stopped?
- Did a momentary power loss interrupt communications?

Digital Operator Display		Fault Name
bUS	bUS	Option Communication Error <ul style="list-style-type: none"> • The connection was lost after establishing initial communication. • Only detected when the Run command or frequency reference is assigned to the option (b1-01 = 3 or b1-02 = 3).
Cause		Possible Solution
Master controller (PLC) has stopped communicating		<ul style="list-style-type: none"> • Check that power is supplied to the PLC • Check that PLC is not in program mode
Communication cable is not connected properly		<ul style="list-style-type: none"> • Check for faulty wiring • Correct any wiring problems
A data error occurred due to noise		<ul style="list-style-type: none"> • Check the various options available to minimize the effects of noise • Counteract noise in the control circuit, main circuit, and ground wiring • If a magnetic contactor is identified as a source of noise, install a surge absorber to the contactor coil • Make sure the cable used meets requirements • Make sure the option ground wire is connected between option FE terminal and the drive ground terminal connected to earth ground
Option is damaged		If there are no problems with the wiring and the error continues to occur, replace the option.

Digital Operator Display		Fault Name
<i>EF0</i>	EF0	Option Card External Fault The alarm function for an external device has been triggered.
Cause		Possible Solutions
An external fault was received from the PLC and F6-03 is set to a value other than 3.		<ul style="list-style-type: none"> Remove the cause of the external fault. Remove the external fault input from the PLC.
Problem with the PLC program		Check the PLC program and correct problems.

Digital Operator Display		Fault Name
<i>oFA00</i>	oFA00	Option Card Connection Error at Option Port CN5-A Option compatibility error
Cause		Possible Solution

Digital Operator Display		Fault Name
<i>oFA01</i>	oFA01	Option Card Fault at Option Port CN5-A Option not properly connected
Cause		Possible Solution
The option card connection to port CN5-A is faulty		<ul style="list-style-type: none"> Turn off the power and reconnect the option card. Check if the option card is properly plugged into the option port. Make sure the card is fixed properly. If the option is not a communication option card, try to use the card in a different option port. If the option card works properly in a different option port, CN5-A is damaged, and the drive requires replacement. If the error persists (oFb01 or oFC01 occur), replace the option card.

Digital Operator Display		Fault Name
<i>oFA03₁₀</i> <i>oFA06</i>	oFA03 to oFA06	Option Card Error Occurred at Option Port CN5-A
<i>oFA10</i> <i>oFA11</i>	oFA10, oFA11	
<i>oFA12₁₀</i> <i>oFA17</i>	oFA12 to oFA17	Option Card Connection Error (CN5-A)
<i>oFA30₁₀</i> <i>oFA43</i>	oFA30 to oFA43	Communication Option Card Connection Error (CN5-A)
Cause		Possible Solution
Option card or hardware is damaged		<ul style="list-style-type: none"> Cycle power to the drive. If the problem continues, replace the control board or the entire drive. Contact Yaskawa or a Yaskawa representative for instructions on replacing the control board.

10 Troubleshooting

Digital Operator Display		Fault Name
oFb00	oFb00	Option Card Fault at Option Port CN5-B
		Option compatibility error
Cause		Possible Solution
The option card installed into port CN5-B is incompatible with the drive		Confirm that the drive supports the option card to be installed. Refer to Option Compatibility on page 47 for details. Contact Yaskawa for assistance.
A communication option card has been installed in option port CN5-B		Communication option cards are only supported by option port CN5-A. It is not possible to install more than one communication option.

Digital Operator Display		Fault Name
oFb02	oFb02	Option Card Fault at Option Port CN5-B
		Same type of option card is currently connected
Cause		Possible Solution
An option card of the same type is already installed in option port CN5-A		Except for PG options, only one of each option card type can only be installed simultaneously. Make sure only one type of option card is connected. Refer to Option Compatibility on page 47 for details. Contact Yaskawa for assistance.
An input option card is already installed in option port CN5-A		Install a communication option, a digital input option, or an analog input option. More than one of the same type of card cannot be installed simultaneously.

Digital Operator Display		Fault Name
oFC00	oFC00	Option Card Connection Error at Option Port CN5-C
		Option compatibility error
Cause		Possible Solution
The option card installed into port CN5-C is incompatible with the drive		Confirm that the drive supports the option card to be installed. Refer to Option Compatibility on page 47 for details. Contact Yaskawa for assistance.
A communication option card has been installed in option port CN5-C		Communication option cards are only supported by option port CN5-A. It is not possible to install more than one communication option.

Digital Operator Display		Fault Name
oFC02	oFC02	Option Card Fault at Option Port CN5-C
		Same type of option card is currently connected
Cause		Possible Solution
An option card of the same type is already installed in option port CN5-A or CN5-B.		Except for PG options, only one of each option card type can only be installed simultaneously. Make sure only one type of option card is connected.
An input option card is already installed in option port CN5-A or CN5-B.		Install a communication option, a digital input option, or an analog input option. More than one of the same type of card cannot be installed simultaneously.

■ Minor Faults and Alarms

Digital Operator Display		Minor Fault Name	
CALL	CALL	Serial Communication Transmission Error	
		Communication has not yet been established.	
Cause		Possible Solutions	Minor Fault (H2-□□ = 10)
Communications wiring is faulty, there is a short circuit, the wiring is incorrect, or the connections are poor.		<ul style="list-style-type: none"> • Check for wiring errors. • Correct the wiring. • Check for disconnected cables and short circuits. Repair as needed. 	YES
Programming error on the master side.		Check communications at start-up and correct programming errors.	
Communications circuitry is damaged.		<ul style="list-style-type: none"> • Perform a self-diagnostics check. • If the problem continues, replace the control board or the entire drive. Contact Yaskawa for instructions on replacing the control board. 	
Termination resistor setting is incorrect.		Install a termination resistor at both ends of a communication line. Set the internal termination resistor switch correctly on slave drives. Place DIP switch S1 to the ON position.	

■ bUS Fault Tolerance

bUS Fault Auto-Restart

Parameter F6-14, bUS Fault Auto Reset Select, will appear when the option is installed.

Setting F6-14 = 0 (Disabled) or F6-01 = 3 or greater (Alarm only) will not affect standard default drive behavior.

Setting F6-14 = 1 (Enabled) AND F6-01 ≠ 3 (Fault) will cause the following operation: The bUS fault occurs after the F7-16 delay and the Run command is removed from the drive. Then the option throws a bUS fault to the drive. When the condition is removed, the option commands a fault reset and returns control of the drive to the EtherNet/IP network.

Note: The option will only read parameter F6-01 and F6-14 from the drive during power-up.

bUS Fault Delay

Parameter F7-16, Communications Loss Detection Time Delay, will appear when the option is installed.

The setting value of F7-16 is the length of time that the option will delay sending the bUS fault to the drive.

The status LEDs on the option are not affected by the delay time set in F7-16; the LEDs will indicate the bUS condition immediately.

Note: The option will only read parameter F7-16 from the drive during power-up.

◆ Option Error Codes

■ Option Fault Monitors U6-98 and U6-99

The option can declare error/warning conditions via drive monitor parameters on the drive digital operator as shown in [Table 10](#).

Table 10 Option Fault Monitor Descriptions

Fault Condition	Fault Declared	Status Value (U6-98/U6-99)	Description
No Fault	n/a	0	No faults
Force Fault	EF0	3	Network sent a message to force this node to the fault state.
Connection Timeout	BUS ERROR	1101	The control connection timed out.
Duplicate IP Address	BUS ERROR	1102	This node and at least one other node have the same IP Address.
Default MAC Address	None	1103	Factory default MAC Address programmed into the option. Return for reprogramming.
Network Link Down	BUS ERROR	1104	No network link to option.
Hardware Error	BUS ERROR	1105	Option card hardware has stopped functioning. Cycle power to the drive.

Two drive monitor parameters, U6-98 and U6-99 assist the user in network troubleshooting.

- U6-98 displays the first declared fault since the last power cycle. U6-98 is only cleared upon drive power-up.
- U6-99 displays the present option status. U6-99 is cleared upon a network-issued fault reset and upon power-up.

If another fault occurs while the original fault is still active, parameter U6-98 retains the original fault value and U6-99 stores the new fault status value.

◆ Option Compatibility

A limited number of options may be simultaneously connected to the drive depending on the type of option.

Table 11 below lists the number of options that can be connected to the drive and the drive ports for connecting those options.

Table 11 Option Installation

Option	Port/Connector	Number of Options Possible
PG-B3, PG-X3	CN5-C	2 </>
PG-F3 </> </>, PG-RT3 </> </>	CN5-C	1
AO-A3, DO-A3	CN5-A, B, C	1
SI-B3 </>, SI-C3, SI-EN3 </>, SI-EN3D, SI-EM3 </>, SI-EM3D, SI-EP3 </>, SI-ES3 </>, SI-ET3 </>, SI-N3, SI-P3, SI-S3, SI-T3, SI-W3 </>, AI-A3 </>, DI-A3 </>	CN5-A	1

- <1> When connecting two PG option cards, use both CN5-B and CN5-C. When connecting only one PG option card, use the CN5-C connector.
- <2> Not available for the application with Motor 2 Selection.
- <3> Not available with models 4A0930 and 4A1200.
- <4> When using AI-A3 and DI-A3 as monitors, the card can be connected to any of CN5-A, CN5-B or CN5-C. The input status of AI-A3 can then be viewed using U1-21, U1-22, and U1-23, and the input status of DI-A3 can then be viewed using U1-17.

11 Specifications

Table 12 Option Specifications

Item	Specification
Model	SI-EM3D
Supported Messages	<ul style="list-style-type: none"> • Read Multiple Registers (03H) • Write Single Register (06H) • Write Multiple Registers (10H) • Read and Write Registers (17H) Commands that support multiple registers have a maximum Read and Write size of 16 registers.
Option Conformance	Modbus-IDA Passed
Connector Type	RJ45 8-pin Shielded Twisted Pair Cat5e cable
Physical Layer Type	Isolated Physical Layer
IP Address Setting	Programmable from drive keypad or network
Communication Speed	Programmable from drive keypad or network: 10/100 Mbps, auto-negotiate
Number of Connections	Modbus TCP/IP: 10 Web Page Access: 2
Duplex Mode	Half-forced, Auto-negotiate, Full-forced
Address Startup Mode	Static, BOOTP, DHCP
Ambient Temperature	-10 °C to +50 °C (14 °F to 122 °F)
Humidity	95% RH or lower with no condensation
Storage Temperature	-20 °C to +60 °C (-4 °F to +140 °F) allowed for short-term transport of the product
Area of Use	Indoor (free of corrosive gas, airborne particles, etc.)
Altitude	1000 m (3280 ft.) or lower

This Page Intentionally Blank

Revision History

The revision dates and the numbers of the revised manuals appear on the bottom of the back cover.

MANUAL NO.
TOEP YAICOM 18B <1>
Revision number

Published in USA June 2015
Date of publication

Date of Publication	Revision Number	Section	Revised Content
January 2016	<2>	Section 2	Revision: Added support for D1000 and R1000 units.
June 2015	<1>	Front cover	Revision: Format
		Modbus TCP/IP Messaging	Addition: Command register data
		Back cover	Revision: Format
July 2014	-	-	First Edition

YASKAWA AC Drive 1000-Series Option MODBUS TCP/IP Installation Manual

YASKAWA AMERICA, INC.

2121, Norman Drive South, Wheeling, IL 60085, U.S.A.
Phone: 1-800-YASKAWA (927-5252) or 1-847-887-7000 Fax: 1-847-887-7310
<http://www.yaskawa.com>

YASKAWA ELÉTRICO DO BRASIL LTDA.

777, Avenida Piraporinha, Diadema, São Paulo, 09950-000, Brasil
Phone: 55-11-3585-1100 Fax: 55-11-3585-1187
<http://www.yaskawa.com.br>

YASKAWA**YASKAWA AMERICA, INC.**

In the event that the end user of this product is to be the military and said product is to be employed in any weapons systems or the manufacture thereof, the export will fall under the relevant regulations as stipulated in the Foreign Exchange and Foreign Trade Regulations. Therefore, be sure to follow all procedures and submit all relevant documentation according to any and all rules, regulations and laws that may apply.
Specifications are subject to change without notice for ongoing product modifications and improvements.

© 2014-2016 YASKAWA AMERICA, INC.



TOEPYAICOM18

MANUAL NO.
TOEP YAICOM 18C <2>

Published in USA January 2016 14-6